

## Section One: Recital (80 marks)

Select four pieces from the following list (20 marks each)

As an alternative to the pieces below, candidates may perform up to 4 free choice pieces.  
For guidance on selecting and approving free choice pieces please [click here](#)

Composer/Artist	Title	Book/Cat. Ref	Publisher
Stevie Wonder	Superstition	cat. ref: 174643	<a href="https://sheetmusicdirect.com">sheetmusicdirect.com</a>
The Meters	Cissy Strut	cat. ref: 174634	<a href="https://sheetmusicdirect.com">sheetmusicdirect.com</a>
Black Sabbath	Paranoid	cat. ref: 174296	<a href="https://sheetmusicdirect.com">sheetmusicdirect.com</a>
Nirvana	Smells like Teen Spirit	cat. ref: 381768	<a href="https://sheetmusicdirect.com">sheetmusicdirect.com</a>
Led Zeppelin	Rock and Roll	cat. ref: 422833	<a href="https://sheetmusicdirect.com">sheetmusicdirect.com</a>
Steely Dan	Peg	cat. ref: 176355	<a href="https://sheetmusicdirect.com">sheetmusicdirect.com</a>
Yes	Owner of a Lonely Heart	cat. ref: 174477	<a href="https://sheetmusicdirect.com">sheetmusicdirect.com</a>
Blink-182	All the Small Things	cat. ref: 174830	<a href="https://sheetmusicdirect.com">sheetmusicdirect.com</a>
System of a Down	Chop Suey	cat. ref: 174824	<a href="https://sheetmusicdirect.com">sheetmusicdirect.com</a>
N/A	Reggae One Drop No.33	Graded solos for Drumkit Book 2	Woodsmoor Press

## Section Two: Technical (20 marks)

Prepare either option 1 or 2 below

### Technical Option 1

#### Technical Exercises:

Perform all the technical exercises  
required for this grade

[Page 3](#)

### Technical Option 2

#### Technical Exercises:

Perform all the technical exercises  
required for this grade

[Page 6](#)

# Technical Exercises

## Technical Exercise 1

Single strokes, double strokes and paradiddles in 16ths, ratamacues and nine stroke rolls. Left handed drummers might wish to reverse the sticking shown. The piece is to be presented alongside an audible click or metronome.

♩ = 80

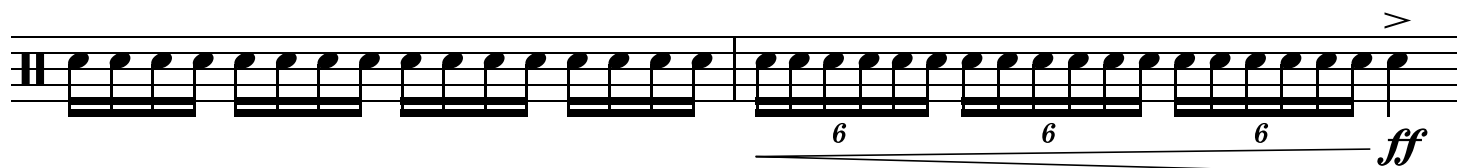
R L R L cont.

R R L L cont.



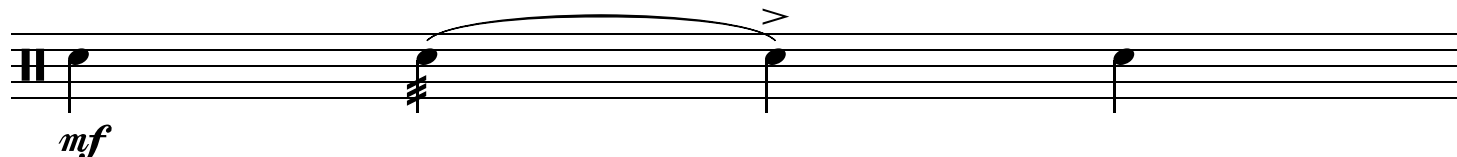
R L R R L R L L cont.

R L R R L L cont.



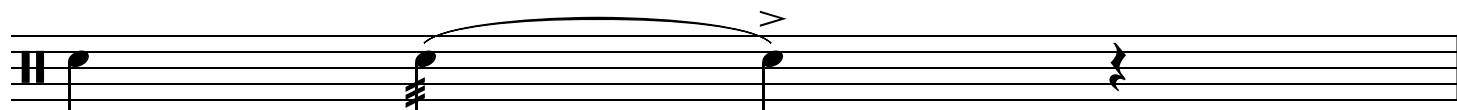
RRLLRRLL

R

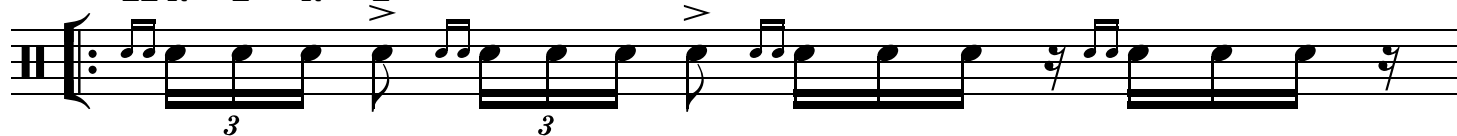


LLRRLLRR

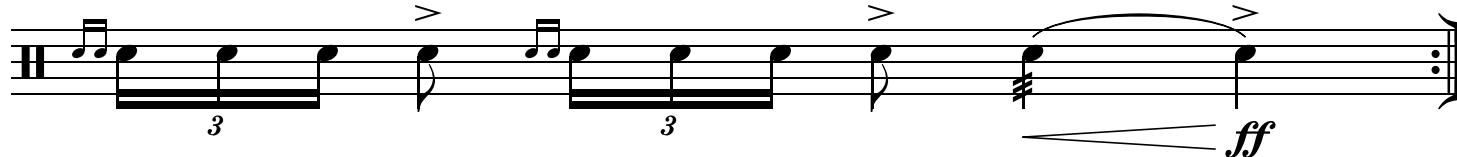
L



LL R L R L RR L R L LL R L R RR L R L



cont.



RRLLRRLL

R

## Option 1

LR L R R RL R L L LR L R R RL R L L <sup>2</sup>

*mf*

R L R R L L *cont.* RRLRLRL L

*ff*

The first staff shows a sequence of rhythmic patterns: LR, L, R, R, RL, R, L, L, LR, L, R, R, RL, R, L, L. The second staff continues with R, L, R, R, L, L, followed by a sixteenth-note run (cont.), and then a triplet of eighth notes (RRLRLRL) followed by a quarter note (L). The dynamics *mf* and *ff* are indicated.

## Technical Exercise 2

The first repeat is to be played as notated, 4 bars in all. Following this a four bar development and solo to be played in the style and character of the piece, the last bar phrased as an ending. Snare notes with lines through them are to be played as rim shots.

$\text{♩} = 100$

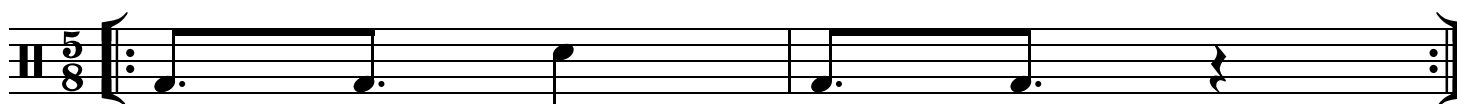
Solo and fills in the style and character of the piece

The first staff is in 5/8 time and consists of four bars. The first three bars contain snare notes with lines through them (rim shots), and the fourth bar contains a snare note with a line through it followed by a quarter rest. The tempo is marked as  $\text{♩} = 100$ . The second staff is a four-bar solo section, with the first bar containing a snare note with a line through it followed by a quarter rest, and the second bar containing a snare note with a line through it followed by a quarter rest. The section ends with a double bar line.

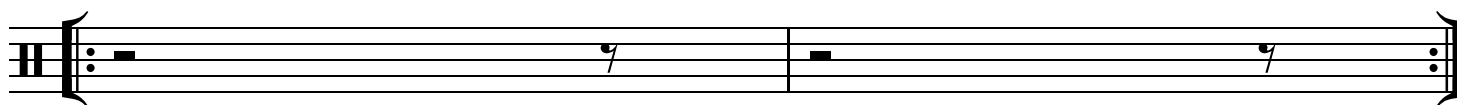
## Technical Exercise 3

This exercise is a study of the movement of rhythmic elements from Drum Kit to other percussion instruments, namely hand percussion or other stylistically appropriate mediums. The previous technical exercise in the grade, Technical Exercise 2, is to be held as a "Rhythmic template" for a developed percussion accompaniment/solo. The following notation serves as an indication of the primary elements in the pattern to be captured. However, this is only a basic indication and the full interpretation/development of the groove is the creative responsibility of the candidate. All repeats are to be played, 8 bars in total.

♩ = 100



Solo and fills in the style and character of the piece



# Technical Exercises

## Technical Exercise 1

Single strokes, double strokes and paradiddles in 16ths, ratamacues and nine stroke rolls. Left handed drummers might wish to reverse the sticking shown. The piece is to be presented alongside an audible click or metronome.

♩ = 80

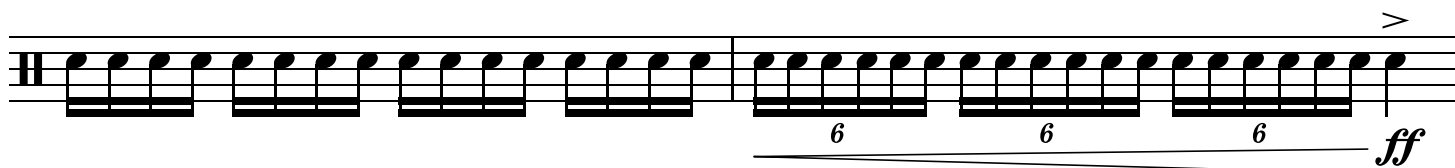
R L R L cont.

R R L L cont.



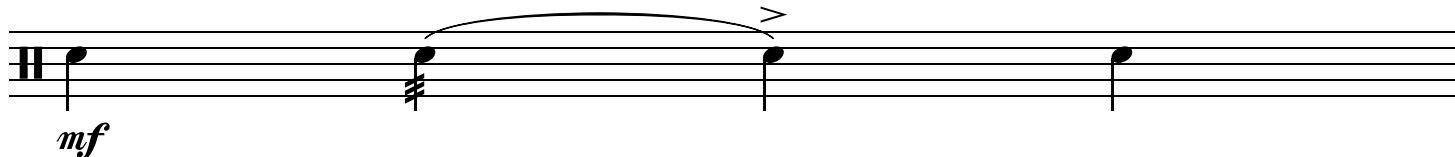
R L R R L R L L cont.

R L R R L L cont.



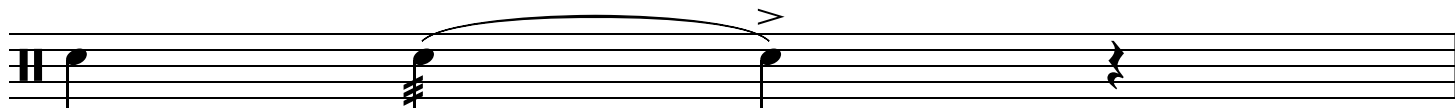
RRLLRRLL

R



LLRRLLRR

L

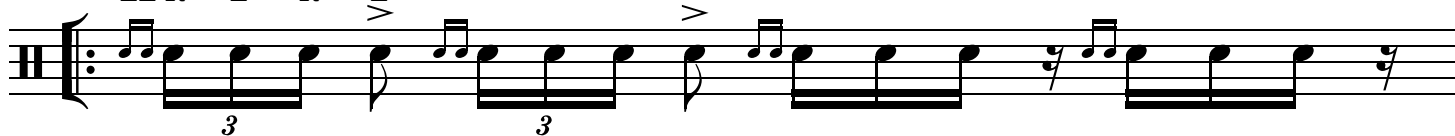


LL R L R L

RR L R L R

LL R L R L

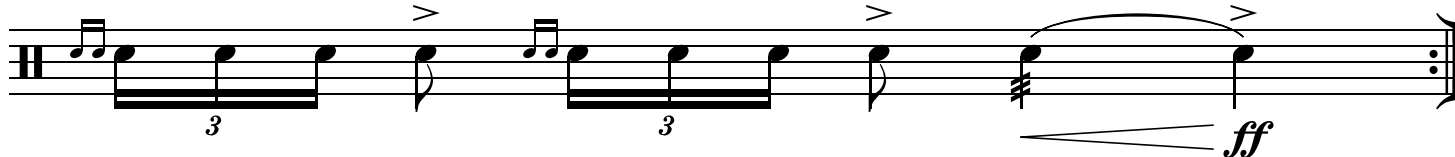
RR L R L



cont.

RRLLRRLL

R



LR L R R RL R L L LR L R R RL R L L 2

*mf*

R L R R L L > cont. RRLRLRL L

6 6 *ff*

The first staff shows a sequence of 16 notes with foot indicators (LR, L, R, R, RL, R, L, L, LR, L, R, R, RL, R, L, L) and a final '2'. The notes are grouped in four sets of four. The second staff continues the sequence with 'R L R R L L' followed by '> cont.' and then 'RRLRLRL L'. The first two groups of four notes are marked with a '6' below them. The final group is marked with a 'ff' dynamic and a crescendo hairpin.

### Technical Exercise 2

The first repeat is to be played as notated, 4 bars in all. Following this a four bar development and solo to be played in the style and character of the piece, the last bar phrased as an ending. Snare notes with lines through them are to be played as rim shots.

$\text{♩} = 100$

5/8

Solo and fills in the style and character of the piece

The first staff is in 5/8 time and contains four bars of notation. The first three bars have snare notes with lines through them (rim shots). The fourth bar has a snare note with a circle above it. The second staff is a four-bar solo section, indicated by the text 'Solo and fills in the style and character of the piece'. It contains four bars of rests, with a '7' written below the first bar.

### Technical Exercise 3

A variety of fills should be presented for the repeats. The solo is an opportunity to showcase a creative approach and this remains the responsibility of the candidate. The elements of fills and solo are to display individual stylistic awareness and expression.

$\text{♩} = 100$

4

Fill

DRUM SOLO-----

The first staff is in 4/4 time and contains four bars of notation. The first three bars have snare notes with lines through them (rim shots). The fourth bar has a snare note with a circle above it. The second staff is a four-bar solo section, indicated by the text 'DRUM SOLO-----'. It contains four bars of rests, with a '4' written below the first bar.