

# Scales & Arpeggios from Memory

For the examination, the candidate should be asked to perform all the following scales and arpeggios from memory. They should perform each scale and arpeggio with separate bows or slurred as requested by the teacher. The teacher should aim for an even distribution of articulations.

(See the [MTB Viola scale bowing patterns example](#))

♩=66

Ab major scale - 1 octave



A major scale - 1 octave



G major scale - 2 octaves



G harmonic minor scale - 2 octaves (only 1 version harmonic or melodic required)



G melodic minor scale - 2 octaves



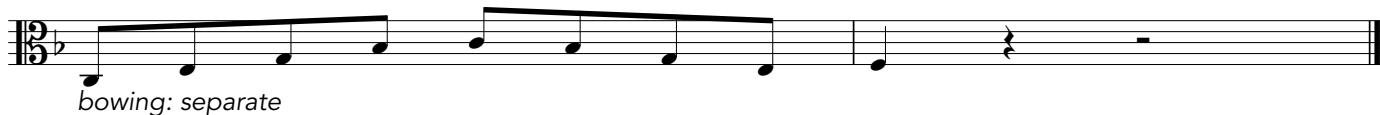
♩=44

G chromatic scale - 1 octave



♩=56

Dominant 7th in F



♩=92

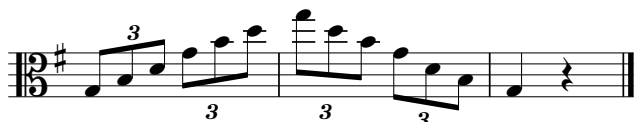
Ab major arpeggio - 1 octave



A major arpeggio - 1 octave



G major arpeggio - 2 octaves



G minor arpeggio - 2 octaves

