

Scales from Memory

For the examination, the candidate should be asked to perform all the following scales and arpeggios from memory. They should perform each scale and arpeggio with separate bows or slurred as requested by the teacher. The teacher should aim for an even distribution of articulations.

(See [MTB Cello Scale Bowing Patterns](#))

Metronome marks can be found on the next page. All tempi given are minimum speeds.

Scales

Eb major	One octave
F major	Two octaves
G major	Two octaves
D minor	Two octaves (harmonic <u>or</u> melodic)

Arpeggios

Eb major	One octave
F major	Two octaves
G major	Two octaves
D minor	Two octaves

Bowing

Scales: Play each scale with long tonics. Separate and slurred in pairs.

Arpeggios: separate and slurred in threes.

(See [MTB Cello Scale bowing patterns](#))

Chromatic Scale

On G One Octave

Bowing: separate

Dominant 7th

In F major One Octave

Bowing: separate

Scales & Arpeggios from Memory

For the examination, the candidate should be asked to perform all the following scales and arpeggios from memory. They should perform each scale and arpeggio with separate bows or slurred as requested by the teacher. The teacher should aim for an even distribution of articulations. All tempi given are minimum speeds.

[\(See MTB Cello Scale Bowing Patterns\)](#)

♩ = 56

E♭ major scale - 1 octave



F major scale - 2 octaves



G major scale - 2 octaves



D harmonic minor scale - 2 octaves (only 1 version harmonic or melodic required)



D melodic minor scale - 2 octaves



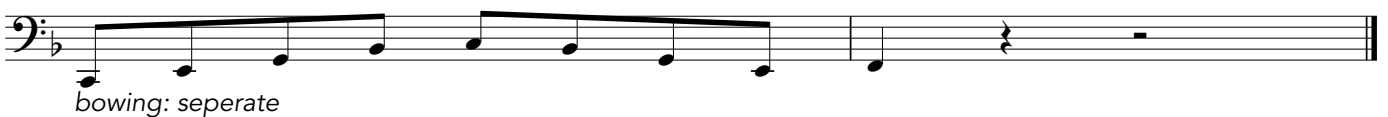
♩ = 44

G chromatic scale - 1 octave



♩ = 56

Dominant 7th in F



♩=92

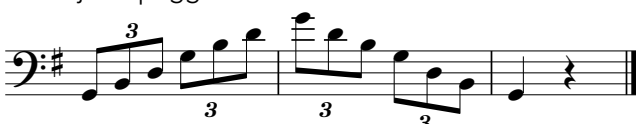
E♭ major arpeggio - 1 octave



F major arpeggio - 2 octaves



G major arpeggio - 2 octaves



D minor arpeggio - 2 octaves

