

Scales from Memory

For the examination, the candidate should be asked to perform all the following scales and arpeggios from memory. They should perform each scale and arpeggio with separate bows or slurred as requested by the teacher. The teacher should aim for an even distribution of articulations.

(See [MTB Cello Scale Bowing Patterns](#))

Metronome marks can be found on the next page. All tempi given are minimum speeds.

Scales

G major	Two octaves
A major	One octave
Bb major	One octave
D minor	One octave (harmonic or melodic)

Arpeggios

D major	Two octaves
A major	One octave
Bb major	One octave
D minor	One octave

Bowing

Scales: Play each scale with long tonics. Separate and slurred in pairs.

Arpeggios: separate and slurred in threes.

(See [MTB Cello Scale bowing patterns](#))

Scales & Arpeggios from Memory

For the examination, the candidate should be asked to perform all the following scales and arpeggios from memory. They should perform each scale and arpeggio with separate bows or slurred as requested by the teacher. The teacher should aim for an even distribution of articulations. All tempi given are minimum speeds.

♩ = 52

(See [MTB Cello Scale Bowing Patterns](#))

A major scale - 1 octave



B \flat major scale - 1 octave



G major scale - 2 octaves



D harmonic minor scale - 1 octave (only 1 version harmonic or melodic required)



D melodic minor scale - 1 octave



♩ = 80

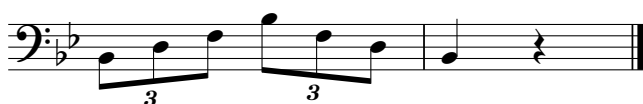
D major arpeggio - 2 octaves



A major arpeggio - 1 octave



B \flat major arpeggio - 1 octave



D minor arpeggio - 1 octave

