

Scales from Memory

For the examination, the candidate should be asked to perform all the following scales and arpeggios from memory. They should perform each scale with separate bows or slurred as requested by the teacher. The Arpeggios are separate bows. The teacher should aim for an even distribution of articulations.

(See [MTB Cello Scale Bowing Patterns](#))

Metronome marks can be found on the next page. All tempi given are minimum speeds.

Scales

D major	One octave
C major	Two octaves
A minor	One octave (natural minor scale)

Arpeggios

D major	One octave
C major	Two octaves
A minor	One octave

Scales & Arpeggios from Memory

For the examination, the candidate should be asked to perform all the following scales and arpeggios from memory. They should perform each scale with separate bows or slurred as requested by the teacher. The Arpeggios are separate bows. The teacher should aim for an even distribution of articulations. All tempi given are minimum speeds.

(See [MTB Cello Scale Bowing Patterns](#))

♩ = 48

D major scale - 1 octave



C major scale - 2 octaves



A natural minor scale - 1 octave

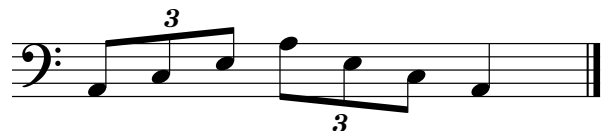


♩ = 72

D major arpeggio - 1 octave



A minor arpeggio - 1 octave



C major arpeggio - 2 octaves

