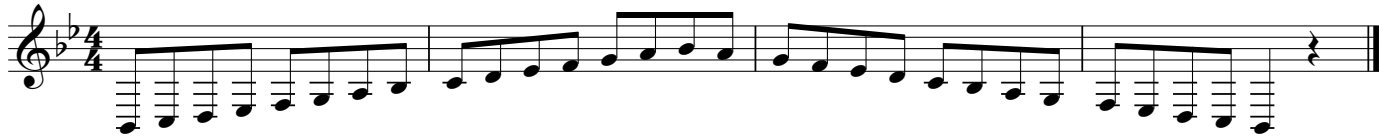


Scales & Arpeggios from Memory

For the examination, the candidate should be asked to perform all the starred (***) scales and arpeggios below plus any other two items from memory. They should perform each scale and arpeggio either tongued or slurred as requested by the teacher. The teacher should aim for an even distribution of articulations. All tempi given are minimum speeds.

♩ = 108

Bb major scale - 2 octaves



*** F# major scale - 2 octaves



*** Bb minor harmonic scale - 2 octaves



*** C# melodic minor scale - 2 octaves



♩ = 72

*** Bb chromatic scale - 2 octaves



♩ = 99

*** Dominant 7th in Bb - 2 octaves



Dominant 7th in F# - 2 octaves



*** Diminished 7th on F# - 2 octaves



♩ = 66

Bb major arpeggio - 2 octaves



F# major arpeggio - 2 octaves



** C# minor arpeggio - 2 octaves



** Bb minor arpeggio - 2 octaves



F# minor arpeggio - 2 octaves

