

Scales & Arpeggios from Memory

For the examination, the candidate should be asked to perform all the following scales and arpeggios from memory. They should perform each scale and arpeggio either tongued or slurred as requested by the teacher. The teacher should aim for an even distribution of articulations. All tempi given are

♩ = 80 minimum speeds.

E major scale - 2 octaves



B major scale - 12th



G harmonic minor scale - 2 octaves



C melodic minor scale - 12th



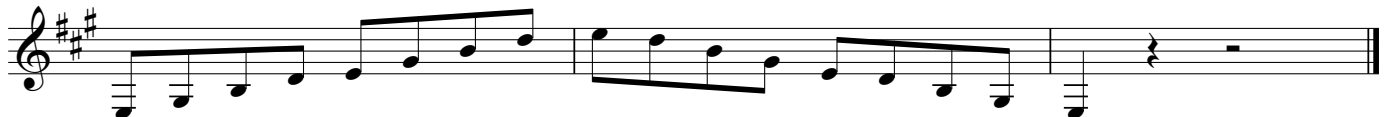
♩ = 53

G chromatic scale - 2 octaves



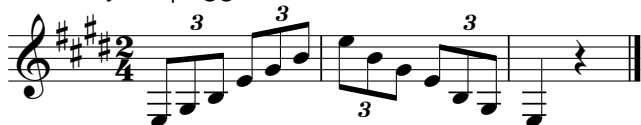
♩ = 84

Dominant 7th in A - 2 octaves



♩ = 112

E major arpeggio - 2 octaves



B major arpeggio - 12th



G minor arpeggio - 2 octaves



C minor arpeggio - 12th

