

Scales & Arpeggios from Memory

For the examination, the candidate should be asked to perform all the following scales and arpeggios from memory. They should perform each scale and arpeggio either tongued or slurred as requested by the teacher. The teacher should aim for an even distribution of articulations. All tempi given are minimum speeds.

♩ = 66

G major scale - 12th



E \flat major scale



E harmonic minor scale



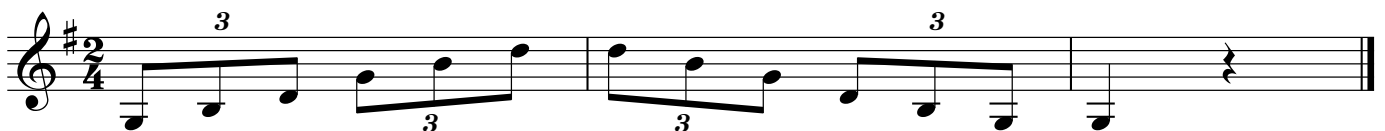
♩ = 44

G chromatic scale



♩ = 92

G major arpeggio - 12th



E \flat major arpeggio



E minor arpeggio

