

# Scales & Arpeggios from Memory

For the examination, the candidate should be asked to perform all the following scales and arpeggios from memory. Scales right hand tirando or apoyando - arpeggios tirando. Use any logical left hand fingers. All tempi given are minimum speeds.

♩ = 132

BbMajor (3 Octaves) Right hand im

Musical notation for Bb Major (3 Octaves) Right hand im. The notation is in treble clef with a key signature of two flats (Bb). It consists of two staves. The first staff shows the ascending scale: C4, Cb4, D4, Eb4, E4, F4, Fb4, G4, Ab4, A4, Bb4, B4, C5. The second staff shows the descending scale: B4, Ab4, G4, F4, Eb4, E4, D4, Cb4, C4, Bb4, Ab4, G4, F4, E4, D4, C4.

BbMinor Harmonic (3 Octaves) Right hand ma

Musical notation for Bb Minor Harmonic (3 Octaves) Right hand ma. The notation is in treble clef with a key signature of three flats (Bbb). It consists of two staves. The first staff shows the ascending scale: C4, Cb4, D4, Eb4, E4, F4, Fb4, G4, Ab4, A4, Bb4, B4, C5. The second staff shows the descending scale: B4, Ab4, G4, F4, Eb4, E4, D4, Cb4, C4, Bb4, Ab4, G4, F4, E4, D4, C4.

BbMinor Melodic (3 Octaves) Right hand ia

Musical notation for Bb Minor Melodic (3 Octaves) Right hand ia. The notation is in treble clef with a key signature of three flats (Bbb). It consists of two staves. The first staff shows the ascending scale: C4, Cb4, D4, Eb4, E4, F4, Fb4, G4, Ab4, A4, Bb4, B4, C5. The second staff shows the descending scale: B4, Ab4, G4, F4, Eb4, E4, D4, Cb4, C4, Bb4, Ab4, G4, F4, E4, D4, C4.

D Major in 3rds (2 Octaves)

First line of musical notation for D Major in 3rds (2 Octaves), showing the first two octaves of the scale in treble clef with a key signature of two sharps (F# and C#).

Second line of musical notation for D Major in 3rds (2 Octaves), showing the continuation of the scale in treble clef with a key signature of two sharps.

D Major in 6ths (2 Octaves)

First line of musical notation for D Major in 6ths (2 Octaves), showing the first two octaves of the scale in treble clef with a key signature of two sharps.

Second line of musical notation for D Major in 6ths (2 Octaves), showing the continuation of the scale in treble clef with a key signature of two sharps.

A Major in Octaves (2 Octaves)

First line of musical notation for A Major in Octaves (2 Octaves), showing the first two octaves of the scale in treble clef with a key signature of three sharps (F#, C#, and G#).

Second line of musical notation for A Major in Octaves (2 Octaves), showing the continuation of the scale in treble clef with a key signature of three sharps.

E Minor Harmonic in Octaves (2 Octaves)

First line of musical notation for E Minor Harmonic in Octaves (2 Octaves), showing the first two octaves of the scale in treble clef with a key signature of one sharp (F#).

Second line of musical notation for E Minor Harmonic in Octaves (2 Octaves), showing the continuation of the scale in treble clef with a key signature of one sharp.

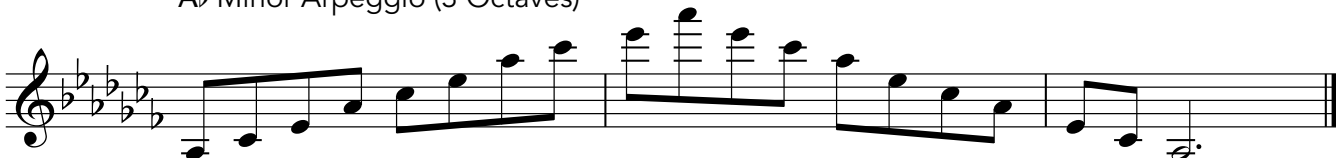
D $\flat$  Major Arpeggio - Beginning on String 5 (2 Octaves)



B $\flat$  Major Arpeggio (3 Octaves)



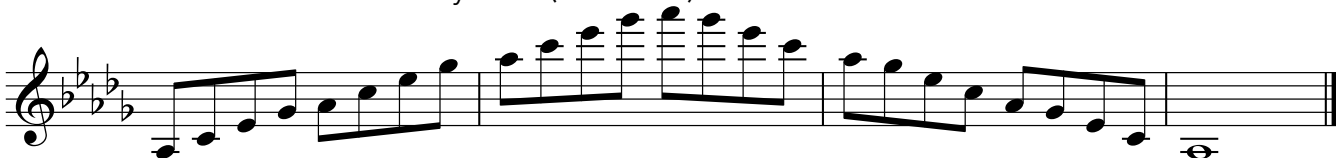
A $\flat$  Minor Arpeggio (3 Octaves)



Dominant 7th in the Key of E $\flat$  (2 Octaves)



Dominant 7th in the Key of D $\flat$  (3 Octaves)



Diminished 7th on A $\flat$  (3 Octaves)

