

Scales & Arpeggios from Memory

For the examination, the candidate should be asked to perform all starred (***) scales and arpeggios below, plus any two other items from memory. They should perform each scale and arpeggio either tongued or slurred as requested by the teacher. The teacher should aim for an even distribution of articulations.

Scales ♩=132 Chromatic & Arpeggios ♩=86

B major scale



*** F# major scale



Db major scale



F# melodic minor scale



*** Eb harmonic minor scale



*** Bb melodic minor scale



*** Dominant 7th in A



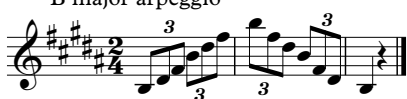
*** Diminished 7th on Bb - 2 octaves



*** Bb chromatic scale - to high F



*** B major arpeggio



F# major arpeggio



Db major arpeggio



*** F# minor arpeggio



Eb minor arpeggio



Bb minor arpeggio

