

MTB Exams

Alternative to scales from memory

Bass Clef Baritone & Euphonium

Grade 3



The following do not need to be played from memory

For the examination perform *all* the following
(only 1 version of minors - harmonic or melodic are required)

Scales ♩=66 Arpeggios triplet ♩=92

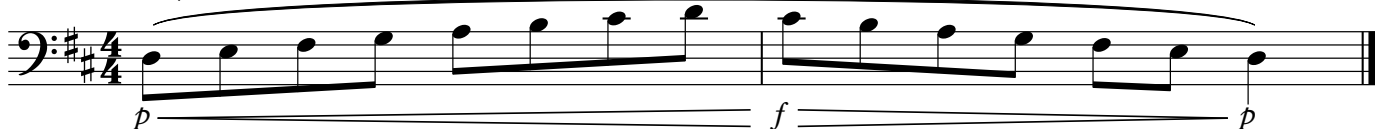
G major scale



G major scale with rhythmic pattern



D major scale



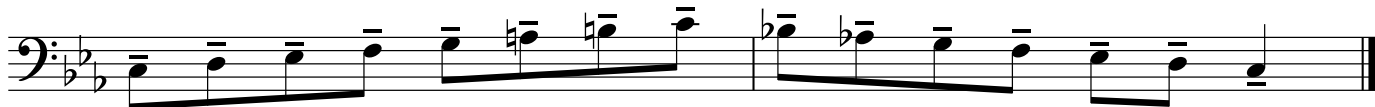
D major scale with rhythmic pattern



C harmonic minor scale (only 1 version harmonic or melodic required)



C melodic minor scale



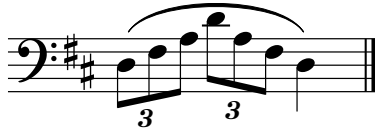
Bb chromatic scale



G major arpeggio



D major arpeggio



C minor arpeggio

