

# MTB Exams Scales

*Trumpet, Cornet, E Flat Tenor Horn, Baritone &  
Euphonium  
Grade 1*

For the examination perform *all* the following scales and arpeggios from memory.  
Play each scale and arpeggio *either* tongued *or* slurred (as requested by the examiner).

Scales ♩ = 50     Arpeggios triplet ♩ = 72

C major scale



A minor harmonic scale (only 1 version harmonic or melodic required)



A minor melodic scale



C major arpeggio



A minor arpeggio



# MTB Exams Scales

Trumpet, Cornet, E Flat Tenor Horn, Baritone &  
Euphonium  
Grade 2

For the examination perform *all* the following scales and arpeggios from memory.  
Play each scale and arpeggio *either* tongued *or* slurred (as requested by the examiner)

Scales ♩=56 Arpeggios triplet ♩=80

Bb major scale



D major scale



C harmonic minor scale (only 1 version harmonic or melodic required)



C melodic minor scale



Bb major arpeggio



D major arpeggio



C minor arpeggio



# MTB Exams Scales

Trumpet, Cornet, E Flat Tenor Horn, Baritone &  
Euphonium  
Grade 3

For the examination perform *all* the following scales and arpeggios from memory.  
Play each scale and arpeggio *either* tongued *or* slurred (as requested by the examiner).

Scales ♩=66 Arpeggios triplet ♩=92

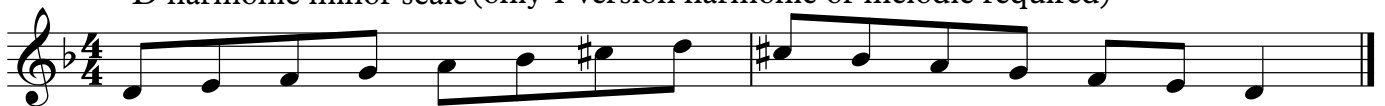
A major scale



E major scale



D harmonic minor scale (only 1 version harmonic or melodic required)



D melodic minor scale



C chromatic scale



A major arpeggio



E major arpeggio



D minor arpeggio



# MTB Exams Scales

*Trumpet, Cornet, E Flat Tenor Horn, Baritone &  
Euphonium*  
Grade 4

For the examination perform *all* the following scales and arpeggios from memory.  
Play each scale and arpeggio *either* tongued *or* slurred (as requested by the examiner).

Scales ♩=72 Arpeggios triplet ♩=100

E♭ major scale



F major scale



C# melodic minor scale



E harmonic minor scale



E♭ major arpeggio



F major arpeggio



C# minor arpeggio



E minor arpeggio



# MTB Exams Scales

Trumpet, Cornet, E Flat Tenor Horn, Baritone &  
Euphonium  
Grade 5

For the examination perform *all* the following scales and arpeggios from memory  
Play each scale and arpeggio *either* tongued *or* slurred (as requested by the examiner)

Scales ♩=80 Arpeggios triplet ♩=112

G major scale - 2 octaves



B major scale - 1 octave



G harmonic minor scale - 2 octaves



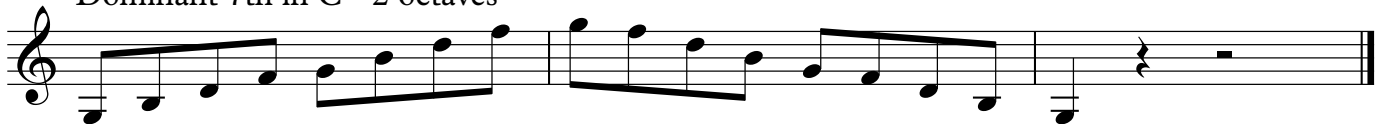
F melodic minor scale - 1 octave



G chromatic scale - 2 octaves



Dominant 7th in C - 2 octaves



G major arpeggio - 2 octaves



B major arpeggio - 1 octave



G minor arpeggio - 2 octaves



F minor arpeggio - 1 octave



# MTB Exams Scales

Trumpet, Cornet, E Flat Tenor Horn, Baritone &  
Euphonium  
Grade 6

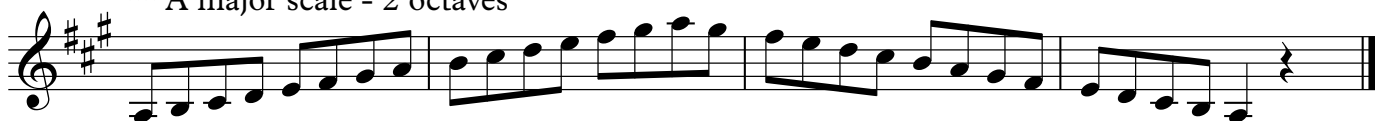
For the examination perform from memory all the starred (\*\*\*) scales and arpeggios below plus any other two items Play each scale and arpeggio *either* tongued *or* slurred (as requested by the teacher)

Scales ♩=96 Arpeggios ♩=56

Ab major scale - 2 octaves



\*\*\* A major scale - 2 octaves



\*\*\* Bb harmonic minor scale - 2 octaves



\*\*\* F# melodic minor scale - 2 octaves



\*\*\* A whole tone scale - 2 octaves



\*\*\* Dominant 7th in D - 2 octaves



\*\*\* Diminished 7th on G - 2 octaves



Ab major arpeggio - 2 octaves



\*\*\* A major arpeggio - 2 octaves



\*\*\* Bb minor arpeggio - 2 octaves



F# minor arpeggio - 2 octaves



# MTB Exams Scales

Trumpet, Cornet, E Flat Tenor Horn, Baritone & Euphonium

Grade 7

For the examination perform from memory all the starred (\*\*\*) scales and arpeggios below plus any other two items. Play each scale and arpeggio *either* tongued *or* slurred (as requested by the teacher)

Scales ♩=108 Arpeggios ♩-66

\*\*\* Bb major scale - 2 octaves



Db major scale - 12th



E major scale - 12th



\*\*\* B melodic minor scale - 2 octaves



D harmonic minor scale - 12th



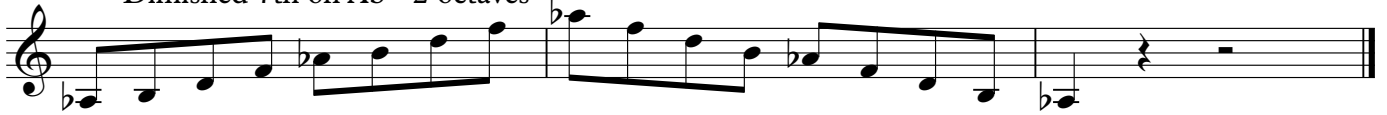
\*\*\* Eb harmonic minor scale - 12th



\*\*\* Dominant 7th in Eb - 2 octaves



\*\*\* Diminished 7th on Ab - 2 octaves



\*\*\* C chromatic scale - 2 octaves



\*\*\* Bb major arpeggio - 2 octaves



Db major arpeggio - 12th



E major arpeggio - 12th



\*\*\* B minor arpeggio - 2 octaves



D minor arpeggio - 12th



Eb minor arpeggio - 12th



# MTB Exams Scales

*Trumpet, Cornet, E Flat Tenor Horn, Baritone  
& Euphonium*

## Grade 8

For the examination perform from memory all the starred (\*\*) scales and arpeggios below plus any other two items. Play each scale and arpeggio *either* tongued *or* slurred (as requested by the teacher)

Scales ♩=120 Arpeggios ♩=76

\*\* F# major scale - 2 octaves

B major scale - 2 octaves

Eb major scale - 12th

G# harmonic minor scale - 2 octaves

A harmonic minor scale - 2 octaves

A melodic minor scale - 2 octaves

\*\* C melodic minor scale - 2 octaves

\*\* Dominant 7th in E - 2 octaves

\*\* Diminished 7th on A - 2 octaves

\*\* Bb whole tone scale - 2 octaves

\*\* F# major arpeggio - 2 octaves

B major arpeggio - 2 octaves

\*\* D major arpeggio - 2 octaves

Eb major arpeggio - 12th

G# minor arpeggio - 2 octaves

\*\* C minor arpeggio - 2 octaves