

MTB Exams

Alternative to scales from memory

Trumpet, Cornet, E Flat Tenor Horn, Baritone &
Euphonium
Grade 1

The following do not need to be played from memory

For the examination perform *all* the following
(only 1 version of minors - harmonic or melodic are required)

Scales ♩ = 50 Arpeggios triplet ♩ = 72

C major scale



C major scale with rhythmic pattern



A minor harmonic scale (only 1 version harmonic or melodic required)



A minor harmonic scale with rhythmic pattern



A minor melodic scale



A minor melodic scale with rhythmic pattern



C major arpeggio



A minor arpeggio



MTB Exams

Alternative to scales from memory

Trumpet, Cornet, E Flat Tenor Horn, Baritone & Euphonium

Grade 2

The following do not need to be played from memory

For the examination perform *all* the following
(only 1 version of minors - harmonic or melodic are required)

Scales ♩=56 Arpeggios triplet ♩=80

Bb major scale



Bb major scale with rhythmic pattern



D major scale



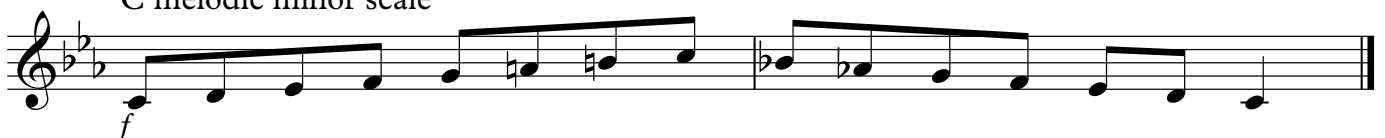
D major scale with rhythmic pattern



C harmonic minor scale (only 1 version harmonic or melodic required)



C melodic minor scale



Bb major arpeggio



D major arpeggio



C minor arpeggio



MTB Exams

Alternative to scales from memory

Trumpet, Cornet, E Flat Tenor Horn, Baritone &
Euphonium
Grade 3

The following do not need to be played from memory

For the examination perform *all* the following
(only 1 version of minors - harmonic or melodic are required)

Scales ♩=66 Arpeggios triplet ♩=92

A major scale



A major scale with rhythmic pattern



E major scale



E major scale with rhythmic pattern



D harmonic minor scale (only 1 version harmonic or melodic required)



D melodic minor scale



C chromatic scale



A major arpeggio



E major arpeggio



D minor arpeggio



MTB Exams

Alternative to scales from memory

Trumpet, Cornet, E Flat Tenor Horn, Baritone &
Euphonium
Grade 4

The following do not need to be played from memory
For the examination perform *all* the following

Scales ♩=72 Arpeggios triplet ♩=100

E♭ major scale



E♭ major scale with rhythmic pattern



F major scale



C# melodic minor scale



E harmonic minor scale



E♭ major arpeggio



F major arpeggio



C# minor arpeggio



E minor arpeggio



MTB Exams

Alternative to scales from memory

Trumpet, Cornet, E Flat Tenor Horn, Baritone &

Euphonium

Grade 5

The following do not need to be played from memory

For the examination perform *all* the following

Scales ♩=80 Arpeggios triplet ♩=112

G major scale - 2 octaves

Musical notation for G major scale - 2 octaves. The scale is written in treble clef with a key signature of one sharp (F#) and a 4/4 time signature. It consists of two octaves of ascending and descending eighth notes. Dynamics are marked as *p* (piano) at the start and end, and *f* (forte) in the middle.

B major scale - 1 octave (swung quavers ♩=♩ ♩=♩)

Musical notation for B major scale - 1 octave (swung quavers). The scale is written in treble clef with a key signature of three sharps (F#, C#, G#) and a 4/4 time signature. It consists of one octave of ascending and descending eighth notes with a swung rhythm. A triplet of eighth notes is indicated at the end of the ascending line.

B major scale with rhythmic pattern

Musical notation for B major scale with rhythmic pattern. The scale is written in treble clef with a key signature of three sharps (F#, C#, G#) and a 4/4 time signature. It consists of one octave of ascending and descending eighth notes with a specific rhythmic pattern.

G harmonic minor scale - 2 octaves

Musical notation for G harmonic minor scale - 2 octaves. The scale is written in treble clef with a key signature of two flats (Bb, Eb) and a 4/4 time signature. It consists of two octaves of ascending and descending eighth notes. Dynamics are marked as *p* (piano) at the start and end, and *mp* (mezzo-piano) in the middle.

F melodic minor scale - 1 octave (swung quavers ♩=♩ ♩=♩)

Musical notation for F melodic minor scale - 1 octave (swung quavers). The scale is written in treble clef with a key signature of two flats (Bb, Eb) and a 4/4 time signature. It consists of one octave of ascending and descending eighth notes with a swung rhythm. A triplet of eighth notes is indicated at the end of the ascending line.

G chromatic scale - 2 octaves

Musical notation for G chromatic scale - 2 octaves. The scale is written in treble clef with a key signature of one sharp (F#) and a 4/4 time signature. It consists of two octaves of ascending and descending chromatic half notes. Triplet markings are present over groups of three notes.

Musical notation for G chromatic scale - 2 octaves (continued). This block shows the continuation of the chromatic scale from the previous block, with triplet markings over groups of three notes.

Dominant 7th in C - 2 octaves

Musical notation for Dominant 7th in C - 2 octaves. The scale is written in treble clef with a key signature of no sharps or flats and a 4/4 time signature. It consists of two octaves of ascending and descending eighth notes, representing the dominant 7th scale in C major.

G major arpeggio - 2 octaves

Musical notation for G major arpeggio - 2 octaves. The arpeggio is written in treble clef with a key signature of one sharp (F#) and a 2/4 time signature. It consists of two octaves of ascending and descending eighth notes. Triplet markings are present over groups of three notes.

G minor arpeggio - 2 octaves

Musical notation for G minor arpeggio - 2 octaves. The arpeggio is written in treble clef with a key signature of two flats (Bb, Eb) and a 2/4 time signature. It consists of two octaves of ascending and descending eighth notes. Dynamics are marked as *p* (piano) at the start and end, and *f* (forte) in the middle. Triplet markings are present over groups of three notes.

B major arpeggio - 1 octave

Musical notation for B major arpeggio - 1 octave. The arpeggio is written in treble clef with a key signature of three sharps (F#, C#, G#) and a 2/4 time signature. It consists of one octave of ascending and descending eighth notes. Triplet markings are present over groups of three notes.

F minor arpeggio - 1 octave

Musical notation for F minor arpeggio - 1 octave. The arpeggio is written in treble clef with a key signature of two flats (Bb, Eb) and a 2/4 time signature. It consists of one octave of ascending and descending eighth notes. Dynamics are marked as *p* (piano) at the start and end, and *f* (forte) in the middle. Triplet markings are present over groups of three notes.

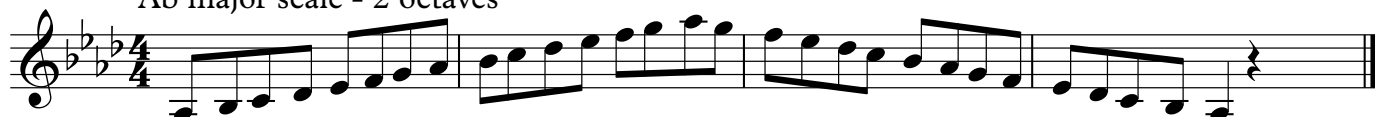
MTB Exams

Alternative to scales from memory Trumpet, Cornet, E Flat Tenor Horn, Baritone & Euphonium Grade 6

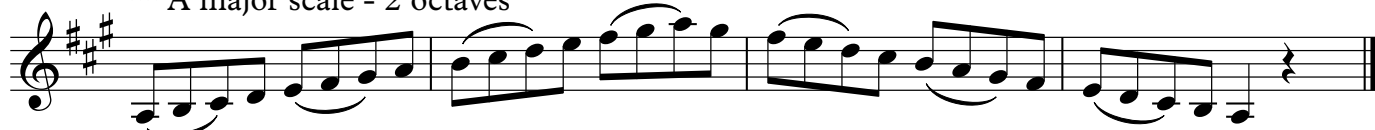
The following do not need to be played from memory. For the examination perform all the starred (**) scales and arpeggios below plus any two other items

Scales ♩=96 Arpeggios ♩=56

Ab major scale - 2 octaves



** A major scale - 2 octaves



** Bb harmonic minor scale - 2 octaves



** F# melodic minor scale - 2 octaves



** A whole tone scale - 2 octaves



** Dominant 7th in D - 2 octaves



** Diminished 7th on G - 2 octaves



Ab major arpeggio - 2 octaves



** A major arpeggio - 2 octaves



** Bb minor arpeggio - 2 octaves



F# minor arpeggio - 2 octaves



MTB Exams

Alternative to scales from memory

Trumpet, Cornet, E Flat Tenor Horn, Baritone & Euphonium

Grade 7

The following do not need to be played from memory. For the examination perform all the starred (***) scales and arpeggios below plus any two other items

Scales ♩=120 Arpeggios ♩-76

**** Bb major scale - 2 octaves**

Db major scale - 12th

E major scale - 12th

**** B melodic minor scale - 2 octaves**

D harmonic minor scale - 12th

**** Eb harmonic minor scale - 12th**

**** Dominant 7th in Eb - 2 octaves**

**** Diminished 7th on Ab - 2 octaves**

**** C chromatic scale - 2 octaves**

**** Bb major arpeggio - 2 octaves**

Db major arpeggio - 12th

E major arpeggio - 12th

**** B minor arpeggio - 2 octaves**

D minor arpeggio - 12th

Eb minor arpeggio - 12th

MTB Exams

Alternative to scales from memory

Trumpet, Cornet, E Flat Tenor Horn, Baritone & Euphonium

Grade 8

The following do not need to be played from memory. For the examination perform all the starred (**) scales and arpeggios below plus any two other items

Scales ♩=132 Arpeggios ♩=86

**** F# major scale - 2 octaves**

Musical notation for F# major scale - 2 octaves. The scale is written in treble clef with a key signature of three sharps (F#, C#, G#) and a 4/4 time signature. It consists of two octaves of ascending and descending eighth notes.

B major scale - 2 octaves

Musical notation for B major scale - 2 octaves. The scale is written in treble clef with a key signature of two sharps (F#, C#) and a 4/4 time signature. It consists of two octaves of ascending and descending eighth notes.

Eb major scale - 12th

Musical notation for Eb major scale - 12th. The scale is written in treble clef with a key signature of three flats (Bb, Eb, Ab) and a 4/4 time signature. It consists of two octaves of ascending and descending eighth notes.

G# harmonic minor scale - 2 octaves

Musical notation for G# harmonic minor scale - 2 octaves. The scale is written in treble clef with a key signature of three sharps (F#, C#, G#) and a 4/4 time signature. It consists of two octaves of ascending and descending eighth notes, with a double sharp (x) on the 7th degree (F#).

A harmonic minor scale - 2 octaves

Musical notation for A harmonic minor scale - 2 octaves. The scale is written in treble clef with a key signature of no sharps or flats and a 4/4 time signature. It consists of two octaves of ascending and descending eighth notes, with a double sharp (x) on the 7th degree (G#).

A melodic minor scale - 2 octaves

Musical notation for A melodic minor scale - 2 octaves. The scale is written in treble clef with a key signature of no sharps or flats and a 4/4 time signature. It consists of two octaves of ascending and descending eighth notes, with a sharp on the 6th degree (F#).

**** C melodic minor scale - 2 octaves**

Musical notation for C melodic minor scale - 2 octaves. The scale is written in treble clef with a key signature of no sharps or flats and a 4/4 time signature. It consists of two octaves of ascending and descending eighth notes, with flats on the 6th (Bb) and 7th (Ab) degrees.

**** Dominant 7th in E - 2 octaves**

Musical notation for Dominant 7th in E - 2 octaves. The scale is written in treble clef with a key signature of three sharps (F#, C#, G#) and a 4/4 time signature. It consists of two octaves of ascending and descending eighth notes, with a sharp on the 7th degree (D#).

**** Diminished 7th on A - 2 octaves**

Musical notation for Diminished 7th on A - 2 octaves. The scale is written in treble clef with a key signature of no sharps or flats and a 4/4 time signature. It consists of two octaves of ascending and descending eighth notes, with a sharp on the 2nd degree (B#) and a flat on the 7th degree (Gb).

**** Bb whole tone scale - 2 octaves**

Musical notation for Bb whole tone scale - 2 octaves. The scale is written in treble clef with a key signature of two flats (Bb, Eb) and a 4/4 time signature. It consists of two octaves of ascending and descending eighth notes.

**** F# major arpeggio - 2 octaves**

Musical notation for F# major arpeggio - 2 octaves. The arpeggio is written in treble clef with a key signature of three sharps (F#, C#, G#) and a 2/4 time signature. It consists of two octaves of ascending and descending eighth notes, with a sharp on the 7th degree (D#).

B major arpeggio - 2 octaves

Musical notation for B major arpeggio - 2 octaves. The arpeggio is written in treble clef with a key signature of two sharps (F#, C#) and a 2/4 time signature. It consists of two octaves of ascending and descending eighth notes.

**** D major arpeggio - 2 octaves**

Musical notation for D major arpeggio - 2 octaves. The arpeggio is written in treble clef with a key signature of two sharps (F#, C#) and a 2/4 time signature. It consists of two octaves of ascending and descending eighth notes.

Eb major arpeggio - 12th

Musical notation for Eb major arpeggio - 12th. The arpeggio is written in treble clef with a key signature of three flats (Bb, Eb, Ab) and a 2/4 time signature. It consists of two octaves of ascending and descending eighth notes.

G# minor arpeggio - 2 octaves

Musical notation for G# minor arpeggio - 2 octaves. The arpeggio is written in treble clef with a key signature of three sharps (F#, C#, G#) and a 2/4 time signature. It consists of two octaves of ascending and descending eighth notes, with a sharp on the 7th degree (F#).

**** C minor arpeggio - 2 octaves**

Musical notation for C minor arpeggio - 2 octaves. The arpeggio is written in treble clef with a key signature of no sharps or flats and a 2/4 time signature. It consists of two octaves of ascending and descending eighth notes, with flats on the 6th (Bb) and 7th (Ab) degrees.