

MTB Technical Exercises

for Trombone (Treble Clef)

Grades 5-8



Ex. 1 - Slide Technique

Grade 5

♩ = 60

Three staves of music in 4/4 time. The first staff contains two measures of eighth-note runs: C4-D4-E4-F4-G4-A4-B4, followed by a whole rest. The second staff contains two measures of eighth-note runs: C4-B3-A3-G3-F3-E3, followed by a whole rest. The third staff contains two measures of eighth-note runs: C4-B3-A3-G3-F3-E3, followed by a whole rest.

Exercise 2 - Lip Slurs

♩ = 92

Exercise 2 consists of six staves, each representing a different slide position. Each staff shows a slur over a sequence of notes. Pos 1: C4-D4-E4-F4-G4-A4-B4. Pos 2: C#4-D#4-E#4-F#4-G#4-A#4-B#4. Pos 3: C#4-B#3-A#3-G#3-F#3-E#3. Pos 4: C#4-B#3-A#3-G#3-F#3-E#3. Pos 5: C#4-B#3-A#3-G#3-F#3-E#3. Pos 6: C#4-B#3-A#3-G#3-F#3-E#3.

Ex.3 Slurring across the slide

♩ = 108

Exercise 3 consists of three staves of music in 4/4 time. The first staff shows a slur across two measures of eighth-note runs: C4-D4-E4-F4-G4-A4-B4, followed by a whole rest. The second staff shows a slur across two measures of eighth-note runs: C#4-D#4-E#4-F#4-G#4-A#4-B#4, followed by a whole rest. The third staff shows a slur across two measures of eighth-note runs: C#4-B#3-A#3-G#3-F#3-E#3, followed by a whole rest.

Grade 6

Ex. 1 - Slide Technique

♩ = 138



Four staves of music in G major (one sharp) and 4/4 time. The piece features a series of eighth-note runs and quarter notes, with a prominent slide technique indicated by a slur over a sequence of notes in the second staff.

Ex. 2 - Lip Slurs

♩ = 120

Pos 1



First staff of music for Ex. 2, labeled 'Pos 1'. It shows a slur over a sequence of eighth notes in G major.

Pos 3



Second staff of music for Ex. 2, labeled 'Pos 3'. It shows a slur over a sequence of eighth notes in B minor (three flats).

Pos 5



Third staff of music for Ex. 2, labeled 'Pos 5'. It shows a slur over a sequence of eighth notes in D major (two sharps).

Pos 6



Fourth staff of music for Ex. 2, labeled 'Pos 6'. It shows a slur over a sequence of eighth notes in E major (three sharps).

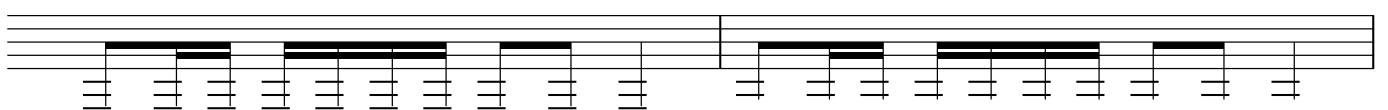
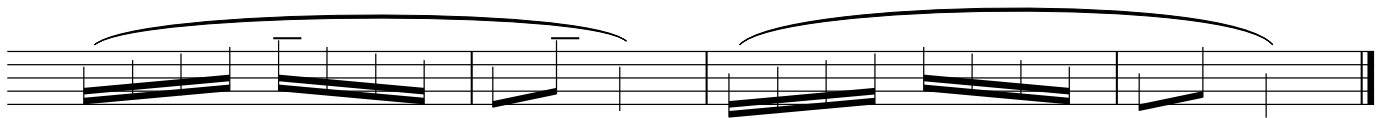
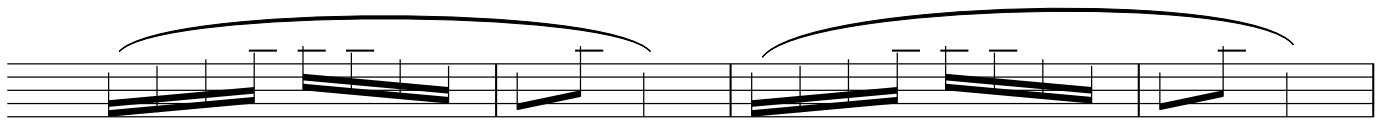
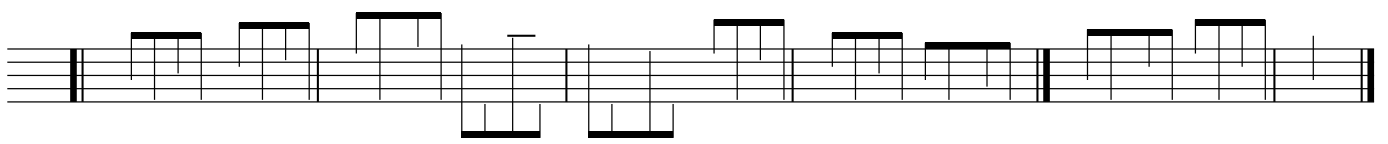
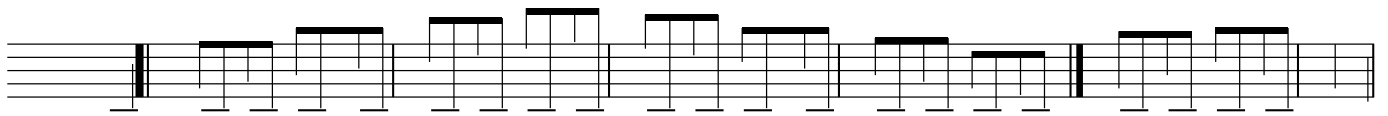
Ex. 3 - Articulation

Use of legato tongue and slurring across the slide (with alternative positions)

♩ = 112



Two staves of music for Ex. 3 in G major and 4/4 time. The first staff features quarter notes with slurs and articulation marks. The second staff features eighth-note runs with slurs and articulation marks.



Ex. 1- Lip Slurs

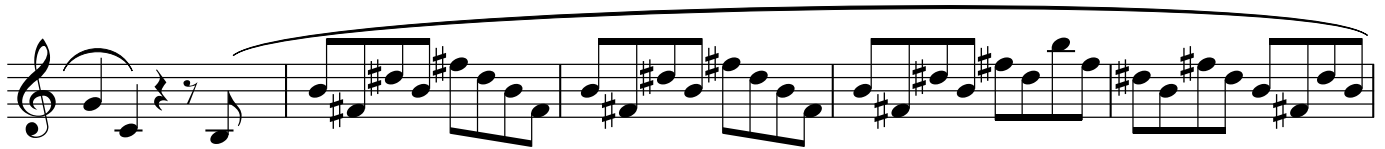
♩ = 144

1st position



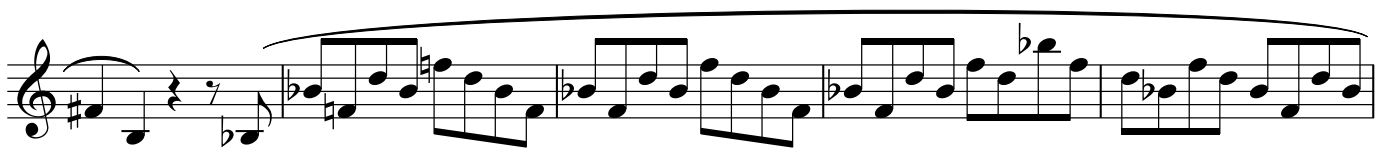
Musical notation for 1st position lip slurs. The staff is in 4/4 time with a treble clef. It begins with a quarter rest followed by a quarter note G4. A slur covers the next 16 notes: G4, A4, B4, C5, B4, A4, G4, F4, E4, D4, C4, B3, A3, G3, F3, E3. The piece ends with a quarter rest.

2nd position




Musical notation for 2nd position lip slurs. The staff is in 4/4 time with a treble clef. It begins with a quarter rest followed by a quarter note G4. A slur covers the next 16 notes: A4, B4, C5, D5, C5, B4, A4, G4, F4, E4, D4, C4, B3, A3, G3, F3. The piece ends with a quarter rest.

3rd position



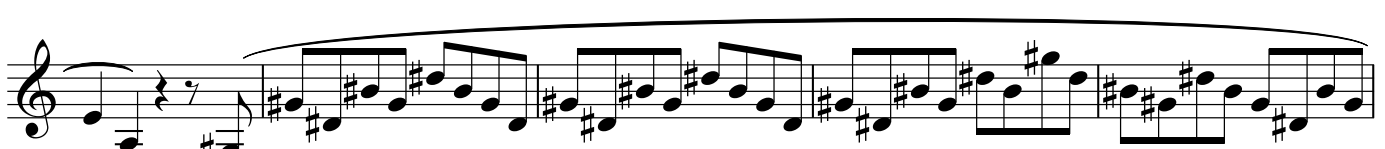
Musical notation for 3rd position lip slurs. The staff is in 4/4 time with a treble clef. It begins with a quarter rest followed by a quarter note G4. A slur covers the next 16 notes: A4, B4, C5, D5, E5, D5, C5, B4, A4, G4, F4, E4, D4, C4, B3, A3. The piece ends with a quarter rest.

4th position



Musical notation for 4th position lip slurs. The staff is in 4/4 time with a treble clef. It begins with a quarter rest followed by a quarter note G4. A slur covers the next 16 notes: A4, B4, C5, D5, E5, F5, E5, D5, C5, B4, A4, G4, F4, E4, D4, C4. The piece ends with a quarter rest.

5th position



Musical notation for 5th position lip slurs. The staff is in 4/4 time with a treble clef. It begins with a quarter rest followed by a quarter note G4. A slur covers the next 16 notes: A4, B4, C5, D5, E5, F5, G5, F5, E5, D5, C5, B4, A4, G4, F4, E4. The piece ends with a quarter rest.

6th position



Musical notation for 6th position lip slurs. The staff is in 4/4 time with a treble clef. It begins with a quarter rest followed by a quarter note G4. A slur covers the next 16 notes: A4, B4, C5, D5, E5, F5, G5, A5, G5, F5, E5, D5, C5, B4, A4, G4. The piece ends with a quarter rest.

Ex. 2 - Major Scale Crabwise Study

♩ = 66



Ex. 3 Slurring Across the Slide

♩ = 58

