

# MTB Exams

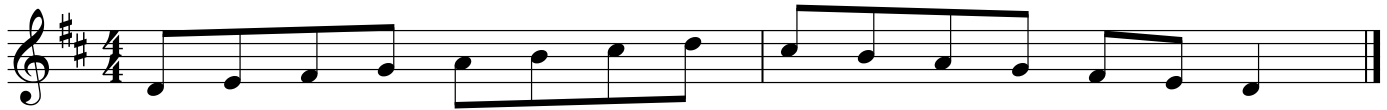
Prepared for English  
4-hole & 6-hole Ocarina

## Ocarina – Grade 1 – Scales

For the examination perform *all* of the following.  
They do not need to be played from memory.

Scales ♩ = 50      Arpeggios triplet ♩ = 72

D major scale



D major scale with rhythmic pattern



G major scale



G major scale with rhythmic pattern



G chromatic scale (5th)



D major arpeggio



G major arpeggio



# MTB Exams

Prepared for English  
4-hole & 6-hole Ocarina

## Ocarina – Grade 2 – Scales

For the examination perform *all* of the following.  
They do not need to be played from memory.

Scales ♩ = 56      Arpeggios triplet ♩ = 80

A major scale



A major scale with rhythmic pattern



E major scale (minor 7th)



E major scale with rhythmic pattern (minor 7th)



B harmonic minor scale (choose *either* harmonic *or* melodic minor)



B melodic minor scale (choose *either* harmonic *or* melodic minor)



A major arpeggio



E major arpeggio (minor 7th)



B minor arpeggio



# MTB Exams

Prepared for English  
6-hole Ocarina

## Ocarina – Grade 3 – Scales

For the examination perform *all* of the following.  
They do not need to be played from memory.

Scales ♩ = 66      Arpeggios triplet ♩ = 92

C major scale



C major scale with rhythmic pattern



F major scale (7th)



F major scale with rhythmic pattern



E harmonic minor scale (choose *either* harmonic or melodic minor)



E melodic minor scale (choose *either* harmonic or melodic minor)



D chromatic scale



C major arpeggio



F major (7th) arpeggio



E minor arpeggio



# MTB Exams

Prepared for English  
6-hole Ocarina

## Ocarina – Grade 4 – Scales

For the examination perform *all* of the following.  
They do not need to be played from memory.

Scales ♩ = 72      Arpeggios triplet ♩ = 100

E major scale



E major scale with rhythmic pattern



D harmonic minor scale (choose *either* harmonic *or* melodic minor)



D melodic minor scale (choose *either* harmonic *or* melodic minor)



A harmonic minor scale (choose *either* harmonic *or* melodic minor)



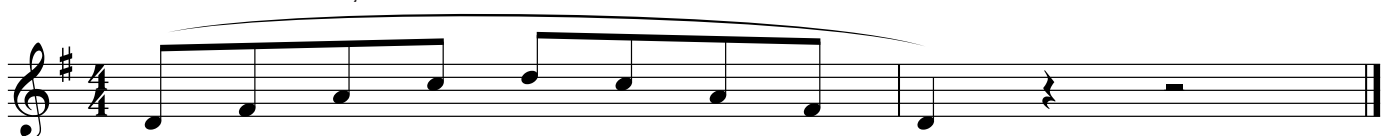
A melodic minor scale (choose *either* harmonic *or* melodic minor)



E blues scale (swung quavers ♩ = ♩♩ )



Dominant 7th in the key of G



E major arpeggio



D minor arpeggio



A minor arpeggio



# MTB Exams

Prepared for English  
6-hole Ocarina

## Ocarina – Grade 5 – Scales

For the examination perform *all* of the following.  
They do not need to be played from memory.

Scales ♩ = 80      Arpeggios triplet ♩ = 112

E $\flat$  major scale



E $\flat$  major scale with rhythmic pattern



G harmonic minor scale (harmonic or melodic with swung quavers ♩ = ♩♩ )



G melodic minor scale (harmonic or melodic with swung quavers ♩ = ♩♩ )



F# harmonic minor scale ( choose either harmonic or melodic minor)



F# melodic minor scale ( choose either harmonic or melodic minor)



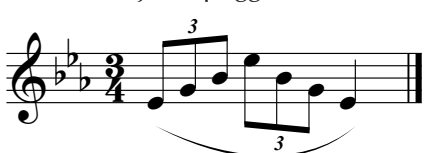
E chromatic scale



D whole tone scale



E $\flat$  major arpeggio



G minor arpeggio



F# minor arpeggio

