

# MTB Exams Scales

## *Flute* *Grade 1*

For the examination perform *all* the following scales and arpeggios from memory.  
Play each scale and arpeggio *either* tongued *or* slurred (as requested by the examiner).

Scales ♩ = 50     Arpeggios triplet ♩ = 72

F major scale



G major scale



E harmonic minor scale



F major arpeggio



G major arpeggio



E minor arpeggio



# MTB Exams Scales

## *Flute* *Grade 2*

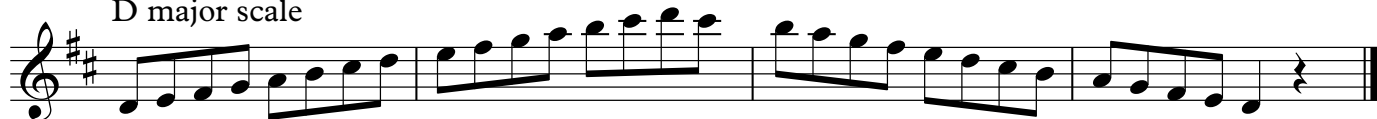
For the examination perform *all* the following scales and arpeggios from memory.  
Play each scale and arpeggio *either* tongued *or* slurred (as requested by the examiner)

Scales ♩=56 Arpeggios triplet ♩=80

Bb major scale



D major scale



B harmonic minor scale (only 1 version harmonic or melodic required)



B melodic minor scale



G harmonic minor scale (only 1 version harmonic or melodic required)



G melodic minor scale



Bb major arpeggio



D major arpeggio



B minor arpeggio



G minor arpeggio



# MTB Exams Scales

## Flute Grade 3

For the examination perform *all* the following scales and arpeggios from memory.  
Play each scale and arpeggio *either* tongued *or* slurred (as requested by the examiner).

Scales ♩=66 Arpeggios triplet ♩=92

E♭ major scale



F major scale



A major scale 12th



D harmonic minor scale (only 1 version harmonic or melodic required)



D melodic minor scale



F# harmonic minor scale 12th (only 1 version harmonic or melodic required)



F# melodic minor scale 12th



F chromatic scale



E♭ major arpeggio



A major arpeggio



D minor arpeggio



F# minor arpeggio



# MTB Exams Scales

## Flute Grade 4

For the examination perform *all* the following scales and arpeggios from memory.  
Play each scale and arpeggio *either* tongued *or* slurred (as requested by the examiner).

Scales ♩=72 Arpeggios triplet ♩=100

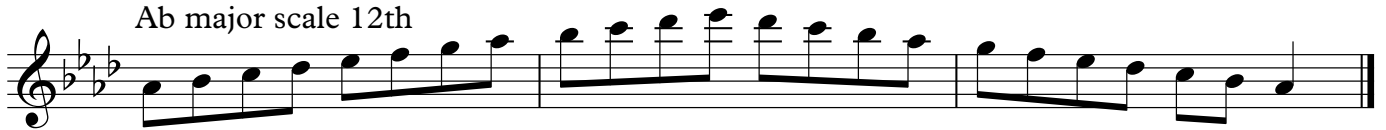
E major scale



G major scale



Ab major scale 12th



E harmonic minor scale (only 1 version harmonic or melodic required)



E melodic minor scale



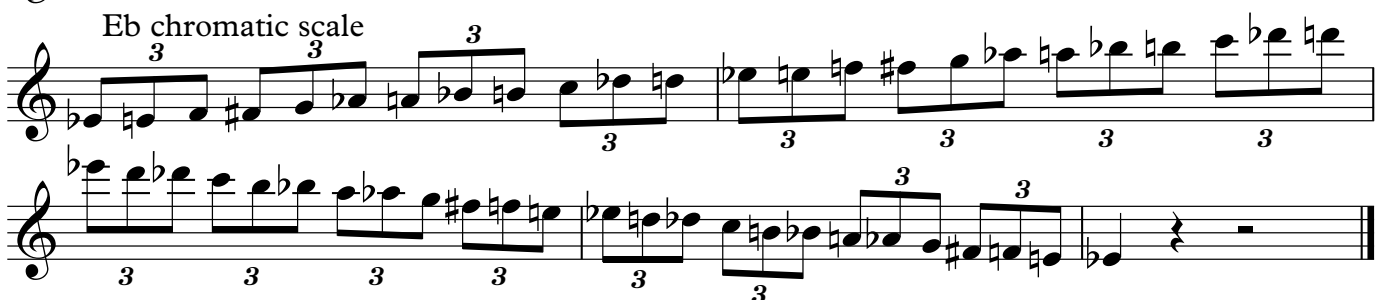
F harmonic minor scale (only 1 version harmonic or melodic required)



F melodic minor scale



Eb chromatic scale



E major arpeggio



Ab major 12th arpeggio



E minor arpeggio



F minor arpeggio





# MTB Exams Scales

## Flute Grade 6

For the examination perform *all* the following scales and arpeggios from memory  
Play each scale and arpeggio *either* tongued *or* slurred (as requested by the examiner)

Scales ♩=96 Arpeggios ♩=56

Bb major scale - 2 octaves



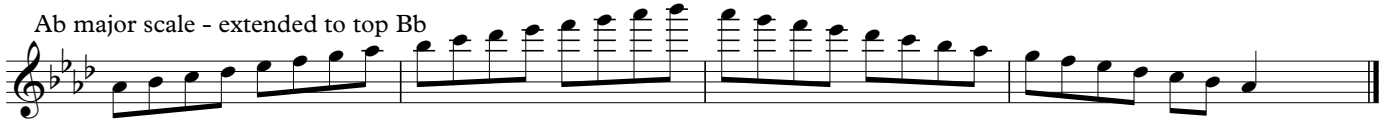
Musical notation for the Bb major scale, 2 octaves, in 4/4 time. The scale starts on Bb and ends on Bb. The notation shows the ascending and descending lines with appropriate accidentals.

Eb major scale - extended to top Bb



Musical notation for the Eb major scale, extended to the top Bb, in 4/4 time. The scale starts on Eb and ends on Bb. The notation shows the ascending and descending lines with appropriate accidentals.

Ab major scale - extended to top Bb



Musical notation for the Ab major scale, extended to the top Bb, in 4/4 time. The scale starts on Ab and ends on Bb. The notation shows the ascending and descending lines with appropriate accidentals.

C harmonic minor scale - 2 octaves



Musical notation for the C harmonic minor scale, 2 octaves, in 4/4 time. The scale starts on C and ends on C. The notation shows the ascending and descending lines with appropriate accidentals.

C melodic minor scale - 2 octaves



Musical notation for the C melodic minor scale, 2 octaves, in 4/4 time. The scale starts on C and ends on C. The notation shows the ascending and descending lines with appropriate accidentals.

F harmonic minor scale - 2 octaves



Musical notation for the F harmonic minor scale, 2 octaves, in 4/4 time. The scale starts on F and ends on F. The notation shows the ascending and descending lines with appropriate accidentals.

G melodic minor scale - 2 octaves



Musical notation for the G melodic minor scale, 2 octaves, in 4/4 time. The scale starts on G and ends on G. The notation shows the ascending and descending lines with appropriate accidentals.

Bb chromatic scale - 2 octaves



Musical notation for the Bb chromatic scale, 2 octaves, in 4/4 time. The scale starts on Bb and ends on Bb. The notation shows the ascending and descending lines with appropriate accidentals.



Musical notation for the Bb chromatic scale, 2 octaves, in 4/4 time. The scale starts on Bb and ends on Bb. The notation shows the ascending and descending lines with appropriate accidentals.

Diminished 7th on F - 2 octaves



Musical notation for the diminished 7th chord on F, 2 octaves, in 4/4 time. The notation shows the ascending and descending lines with appropriate accidentals.

Diminished 7th on F# - 2 octaves



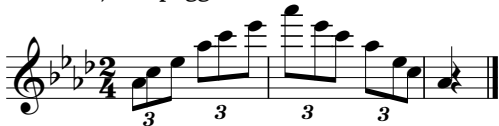
Musical notation for the diminished 7th chord on F#, 2 octaves, in 4/4 time. The notation shows the ascending and descending lines with appropriate accidentals.

Diminished 7th on G - 2 octaves



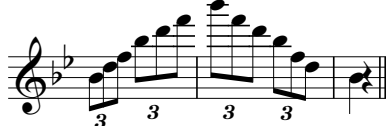
Musical notation for the diminished 7th chord on G, 2 octaves, in 4/4 time. The notation shows the ascending and descending lines with appropriate accidentals.

Ab major arpeggio - 2 octaves



Musical notation for the Ab major arpeggio, 2 octaves, in 4/4 time. The notation shows the ascending and descending lines with appropriate accidentals.

Bb major arpeggio - 2 octaves



Musical notation for the Bb major arpeggio, 2 octaves, in 4/4 time. The notation shows the ascending and descending lines with appropriate accidentals.

C minor arpeggio - 2 octaves



Musical notation for the C minor arpeggio, 2 octaves, in 4/4 time. The notation shows the ascending and descending lines with appropriate accidentals.

# MTB Exams Scales

## Flute Grade 7

For the examination perform *all* the following scales and arpeggios from memory  
Play each scale and arpeggio *either* tongued *or* slurred (as requested by the examiner)

Scales ♩=108 Arpeggios ♩=66

A major scale - Extended

Musical notation for the A major scale extended, starting on A4 and ending on A6. The scale is written in treble clef with a key signature of three sharps (F#, C#, G#) and a 4/4 time signature. It consists of 15 notes: A4, B4, C#5, D5, E5, F#5, G#5, A5, B5, C#6, D6, E6, F#6, G#6, A6.

B major scale - Extended

Musical notation for the B major scale extended, starting on B4 and ending on B6. The scale is written in treble clef with a key signature of four sharps (F#, C#, G#, D#) and a 4/4 time signature. It consists of 15 notes: B4, C#5, D#5, E5, F#5, G#5, A5, B5, C#6, D#6, E6, F#6, G#6, A6, B6.

E major scale - Extended

Musical notation for the E major scale extended, starting on E4 and ending on E6. The scale is written in treble clef with a key signature of four sharps (F#, C#, G#, D#) and a 4/4 time signature. It consists of 15 notes: E4, F#4, G#4, A4, B4, C#5, D#5, E5, F#5, G#5, A5, B5, C#6, D#6, E6.

C# harmonic minor scale - 2 octaves

Musical notation for the C# harmonic minor scale over two octaves, starting on C#4 and ending on C#6. The scale is written in treble clef with a key signature of three sharps (F#, C#, G#) and a 4/4 time signature. The notes are: C#4, D4, E4, F#4, G#4, A4, B4, C#5, D5, E5, F#5, G#5, A5, B5, C#6.

F# harmonic minor scale - 2 octaves

Musical notation for the F# harmonic minor scale over two octaves, starting on F#4 and ending on F#6. The scale is written in treble clef with a key signature of three sharps (F#, C#, G#) and a 4/4 time signature. The notes are: F#4, G#4, A4, B4, C#5, D5, E5, F#5, G#5, A5, B5, C#6, D6, E6, F#6.

B melodic minor scale - 2 octaves

Musical notation for the B melodic minor scale over two octaves, starting on B4 and ending on B6. The scale is written in treble clef with a key signature of two sharps (F#, C#) and a 4/4 time signature. The notes are: B4, C#4, D4, E4, F#4, G#4, A4, B4, C#5, D5, E5, F#5, G#5, A5, B5, C#6, D6, E6, F#6, G#6, A6, B6.

G# melodic minor scale - 2 octaves

Musical notation for the G# melodic minor scale over two octaves, starting on G#4 and ending on G#6. The scale is written in treble clef with a key signature of three sharps (F#, C#, G#) and a 4/4 time signature. The notes are: G#4, A4, B4, C#5, D5, E5, F#5, G#5, A5, B5, C#6, D6, E6, F#6, G#6.

Dominant 7th in E - 2 octaves

Musical notation for the dominant 7th chord in E over two octaves, starting on E4 and ending on E6. The scale is written in treble clef with a key signature of four sharps (F#, C#, G#, D#) and a 4/4 time signature. The notes are: E4, F#4, G#4, A4, B4, C#5, D#5, E5, F#5, G#5, A5, B5, C#6, D#6, E6.

Diminished 7th on B - 2 octaves

Musical notation for the diminished 7th chord on B over two octaves, starting on B4 and ending on B6. The scale is written in treble clef with a key signature of two sharps (F#, C#) and a 4/4 time signature. The notes are: B4, C#4, D4, E4, F#4, G#4, A4, B4, C#5, D5, E5, F#5, G#5, A5, B5, C#6, D6, E6, F#6, G#6, A6, B6.

Whole tone scale on B - 2 octaves

Musical notation for the whole tone scale on B over two octaves, starting on B4 and ending on B6. The scale is written in treble clef with a key signature of two sharps (F#, C#) and a 4/4 time signature. The notes are: B4, C#4, D4, E4, F#4, G#4, A4, B4, C#5, D5, E5, F#5, G#5, A5, B5, C#6, D6, E6, F#6, G#6, A6, B6.

B chromatic scale - 2 octaves

Musical notation for the B chromatic scale over two octaves, starting on B4 and ending on B6. The scale is written in treble clef with a key signature of two sharps (F#, C#) and a 4/4 time signature. The notes are: B4, C#4, D4, E4, F#4, G#4, A4, B4, C#5, D5, E5, F#5, G#5, A5, B5, C#6, D6, E6, F#6, G#6, A6, B6.

Musical notation for the B chromatic scale over two octaves, starting on B4 and ending on B6. The scale is written in treble clef with a key signature of two sharps (F#, C#) and a 4/4 time signature. The notes are: B4, C#4, D4, E4, F#4, G#4, A4, B4, C#5, D5, E5, F#5, G#5, A5, B5, C#6, D6, E6, F#6, G#6, A6, B6.

A major arpeggio - 2 octaves

Musical notation for the A major arpeggio over two octaves, starting on A4 and ending on A6. The scale is written in treble clef with a key signature of three sharps (F#, C#, G#) and a 4/4 time signature. The notes are: A4, C#5, E5, A5, C#6, E6, A6.

B major arpeggio - 2 octaves

Musical notation for the B major arpeggio over two octaves, starting on B4 and ending on B6. The scale is written in treble clef with a key signature of four sharps (F#, C#, G#, D#) and a 4/4 time signature. The notes are: B4, D#5, F#5, B5, D#6, F#6, B6.

G# minor arpeggio - 2 octaves

Musical notation for the G# minor arpeggio over two octaves, starting on G#4 and ending on G#6. The scale is written in treble clef with a key signature of three sharps (F#, C#, G#) and a 4/4 time signature. The notes are: G#4, B4, D#5, G#5, B5, D#6, G#6.

B minor arpeggio - 2 octaves

Musical notation for the B minor arpeggio over two octaves, starting on B4 and ending on B6. The scale is written in treble clef with a key signature of two sharps (F#, C#) and a 4/4 time signature. The notes are: B4, D5, F#5, B5, D6, F#6, B6.

C# minor arpeggio - 2 octaves

Musical notation for the C# minor arpeggio over two octaves, starting on C#4 and ending on C#6. The scale is written in treble clef with a key signature of three sharps (F#, C#, G#) and a 4/4 time signature. The notes are: C#4, E4, G#5, C#5, E5, G#6, C#6.

# MTB Exams Scales

## Flute Grade 8

For the examination perform *all* the following scales and arpeggios from memory  
Play each scale and arpeggio *either* tongued *or* slurred (as requested by the examiner)

Scales ♩=120 Arpeggios ♩=76

C major scale - 3 octaves



F# major scale - 2 octaves



Db major scale - 2 octaves



Ab major scale - Extended



C harmonic minor scale - 3 octaves



C melodic minor scale - 3 octaves



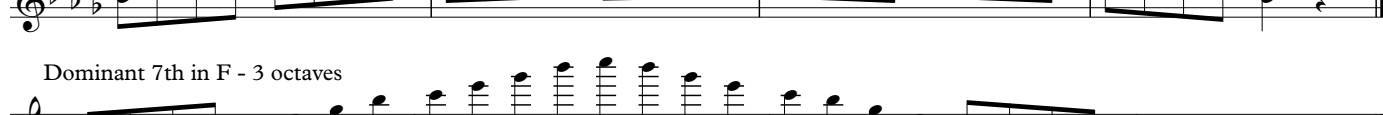
Eb harmonic minor scale - 2 octaves



Bb melodic minor scale - 2 octaves



Dominant 7th in F - 3 octaves



Whole tone scale on C - 3 octaves



C chromatic scale - 3 octaves



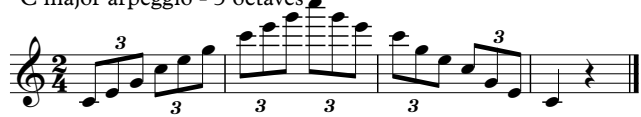
C major arpeggio - 3 octaves



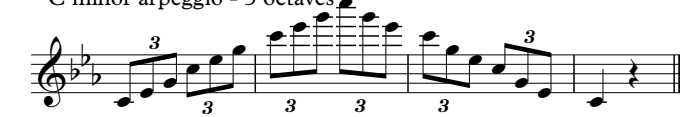
C minor arpeggio - 3 octaves



F# major arpeggio - 2 octaves



Db major arpeggio - 2 octaves



Eb minor arpeggio - 2 octaves



Bb minor arpeggio - 2 octaves



F# major arpeggio - 2 octaves



Db major arpeggio - 2 octaves

