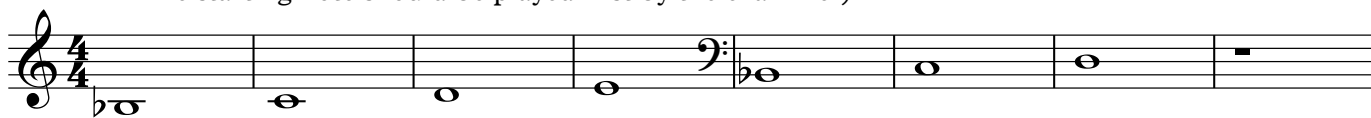


MTB Exams - Aural Tests

Grade 7

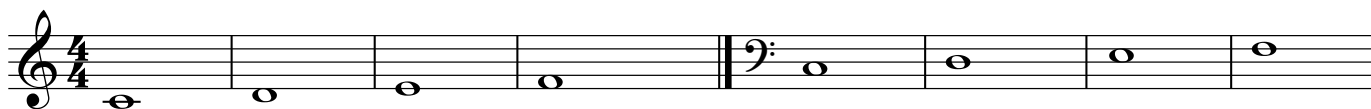
Test 1 - Scales (Starting on one of the following notes, ask the candidate to sing an ascending major scale followed by an ascending harmonic minor scale starting on the same note, The starting note should be played first by the examiner)



Test 2 - Singing notes from a chord (Play a three note chord from the following list on any suitable instrument and ask the candidate to sing back all three notes. The chord selected may be transposed up or down an octave so that it lies within the candidate's vocal range)



Test 3 - Dominant & diminished 7ths (Starting on one of the following notes ask the candidate to sing the notes of an ascending dominant 7th arpeggio followed by an ascending diminished 7th arpeggio starting on the same note. The starting note should be played first by the examiner)



Test 4 - sight singing. (Reading from the music, ask the candidate to sing one of the following six note phrases. Play them the key chord and starting note before they begin. The phrase may be transposed if it does not fall within their vocal range.)

