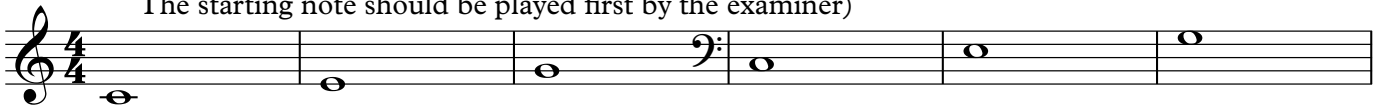


MTB Exams - Aural Tests

Grade 6

Test 1 - Triads (Starting on one of the following notes, ask the candidate to sing an ascending major triad followed by an ascending minor triad starting on the same note, both in root position. The starting note should be played first by the examiner)

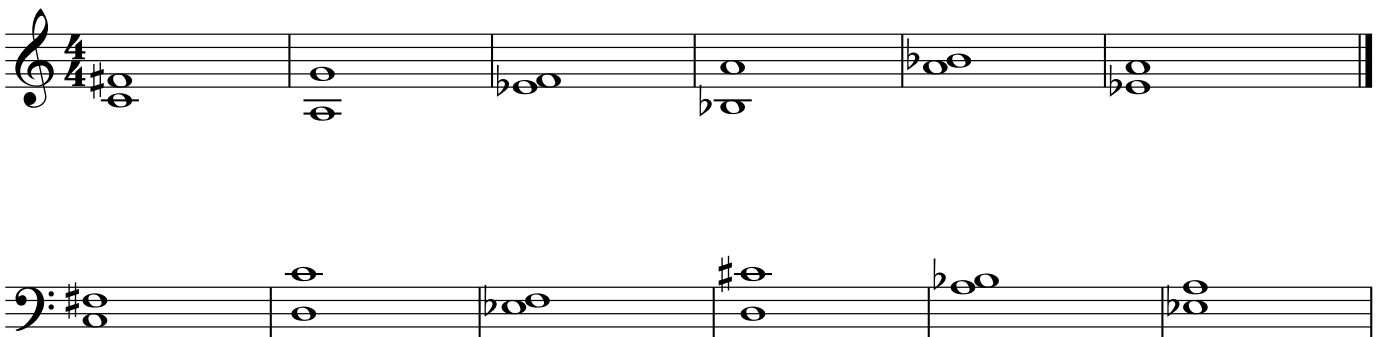


Test 2 - Intervals (Play one of the following notes and ask the candidate to sing a note one of the following intervals above the given note as requested by the examiner - Major 2nd, major 3rd, perfect 4th, perfect 5th, major 6th, major 7th, Octave).

This should then be repeated using a different starting note, asking the candidate to sing a note either a minor 2nd, minor 3rd, minor 6th or minor 7th above the given note as requested by the examiner.



Test 3 - Singing upper and lower notes (Play one of the following harmonic intervals and ask the candidate to sing the upper then the lower note - intervals may be played an octave higher or lower to suit the vocal range of the candidate).



Test 4 - sight singing. (Reading from the music, ask the candidate to sing one of the following four note phrases. Play them the key chord and starting note before they begin. The phrase may be transposed if it does not fall within their vocal range.)

