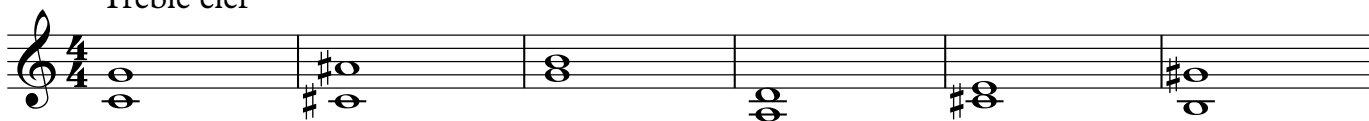


# MTB Exams - Aural Tests

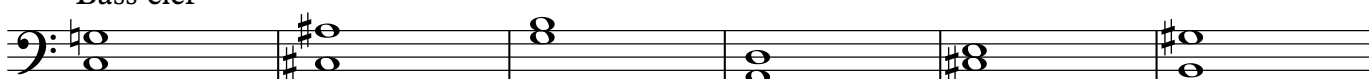
## Grade 2

Test 1 - Singing back notes. (Play a two note chord from the following list on any suitable instrument and ask the candidate to sing back the upper note).

Treble clef



Bass clef



Test 2 - Clapping back rhythms. (Clap a rhythm from the following list and ask the candidate to clap it back)

1

2



3

4



Test 3 - singing back melodic phrases. (Play a melody from the following list on any instrument and ask the candidate to sing it back. The phrase may be transposed if it does not fall within their vocal range)

1



Test 4 - sight singing. (Reading from the music, ask the candidate to sing one of the following four note phrases. Play them the key chord and starting note before they begin. The phrase may be transposed if it does not fall within their vocal range.)

1 Key chord & starting note

2

3



4

5

6

