

MTB Exams

Alternative to scales from memory

Trombone

Grade 1

The following do not need to be played from memory

For the examination perform *all* the following
(only 1 version of minors - harmonic or melodic are required)

Scales ♩ = 44 Arpeggios triplet ♩ = 66

Bb major scale



Bb major scale with rhythmic pattern



G minor harmonic scale (only 1 version harmonic or melodic required)



G minor harmonic scale with rhythmic pattern



G minor melodic scale



G minor melodic scale with rhythmic pattern



Bb major arpeggio



G minor arpeggio



MTB Exams

Alternative to scales from memory

Trombone

Grade 2

The following do not need to be played from memory

For the examination perform *all* the following
(only 1 version of minors - harmonic or melodic are required)

Scales ♩=48 Arpeggios triplet ♩=72

Ab major scale



Ab major scale with rhythmic pattern



C major scale



C major scale with rhythmic pattern



Bb harmonic minor scale (only 1 version harmonic or melodic required)



Bb melodic minor scale



Ab major arpeggio



C major arpeggio



Bb minor arpeggio



MTB Exams

Alternative to scales from memory

Trombone

Grade 3

The following do not need to be played from memory

For the examination perform *all* the following
(only 1 version of minors - harmonic or melodic are required)

Scales ♩=56 Arpeggios triplet ♩=84

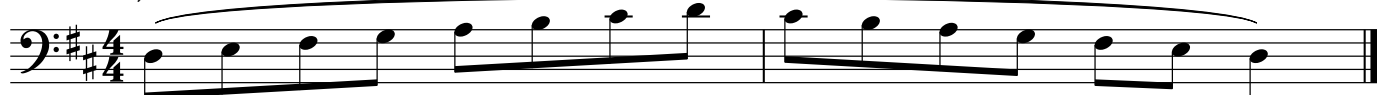
G major scale



G major scale with rhythmic pattern



D major scale



D major scale with rhythmic pattern



C harmonic minor scale (only 1 version harmonic or melodic required)



C melodic minor scale



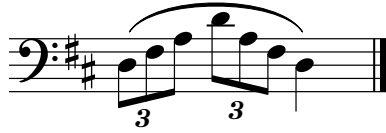
Bb chromatic scale



G major arpeggio



D major arpeggio



C minor arpeggio



MTB Exams

Alternative to scales from memory

Trombone

Grade 4

The following do not need to be played from memory
For the examination perform *all* the following

Scales ♩=64 Arpeggios triplet ♩=92

Db major scale



Db major scale with rhythmic pattern



Eb major scale



B melodic minor scale



D harmonic minor scale



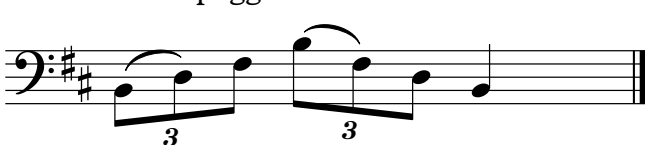
Db major arpeggio



Eb major arpeggio



B minor arpeggio



D minor arpeggio



MTB Exams

Alternative to scales from memory

Trombone

Grade 5

The following do not need to be played from memory
For the examination perform *all* the following

Scales ♩=72 Arpeggios triplet ♩=104

F major scale - 2 octaves

Musical notation for F major scale - 2 octaves. The scale is written in bass clef, 4/4 time, starting on F2 and ending on F4. It consists of two octaves of quarter notes: F, G, A, Bb, C, D, E, F.

A major scale - 1 octave (swung quavers ♩=♩ ♩)

Musical notation for A major scale - 1 octave (swung quavers). The scale is written in bass clef, 4/4 time, starting on A2 and ending on A3. It consists of one octave of eighth notes with a swung feel: A, B, C, D, E, F#, G, A. A triplet of eighth notes is marked above the final A.

A major scale with rhythmic pattern

Musical notation for A major scale with rhythmic pattern. The scale is written in bass clef, 4/4 time, starting on A2 and ending on A3. It consists of one octave of eighth notes with a swung feel: A, B, C, D, E, F#, G, A. A triplet of eighth notes is marked above the final A.

F harmonic minor scale - 2 octaves

Musical notation for F harmonic minor scale - 2 octaves. The scale is written in bass clef, 4/4 time, starting on F2 and ending on F4. It consists of two octaves of quarter notes: F, G, Ab, Bb, C, D, Eb, F.

Eb melodic minor scale - 1 octave (swung quavers ♩=♩ ♩)

Musical notation for Eb melodic minor scale - 1 octave (swung quavers). The scale is written in bass clef, 4/4 time, starting on Eb2 and ending on Eb3. It consists of one octave of eighth notes with a swung feel: Eb, F, G, Ab, Bb, C, D, Eb. A triplet of eighth notes is marked above the final Eb.

F chromatic scale - 2 octaves

Musical notation for F chromatic scale - 2 octaves. The scale is written in bass clef, 4/4 time, starting on F2 and ending on F4. It consists of two octaves of eighth notes, each note followed by its chromatic neighbor. Triplet markings are placed above groups of three notes.

Dominant 7th in Bb - 2 octaves

Musical notation for Dominant 7th in Bb - 2 octaves. The scale is written in bass clef, 4/4 time, starting on Bb2 and ending on Bb4. It consists of two octaves of quarter notes: Bb, C, D, Eb, F, G, Ab, Bb.

F major arpeggio - 2 octaves

Musical notation for F major arpeggio - 2 octaves. The arpeggio is written in bass clef, 2/4 time, starting on F2 and ending on F4. It consists of two octaves of eighth notes: F, A, C, Bb, D, F.

A major arpeggio - 1 octave

Musical notation for A major arpeggio - 1 octave. The arpeggio is written in bass clef, 2/4 time, starting on A2 and ending on A3. It consists of one octave of eighth notes: A, C, E, G, A.

F minor arpeggio - 2 octaves

Musical notation for F minor arpeggio - 2 octaves. The arpeggio is written in bass clef, 2/4 time, starting on F2 and ending on F4. It consists of two octaves of eighth notes: F, Ab, C, Bb, D, F.

Eb minor arpeggio - 1 octave

Musical notation for Eb minor arpeggio - 1 octave. The arpeggio is written in bass clef, 2/4 time, starting on Eb2 and ending on Eb3. It consists of one octave of eighth notes: Eb, G, Bb, Ab, Eb.

MTB Exams

Alternative to scales from memory

Trombone

Grade 6

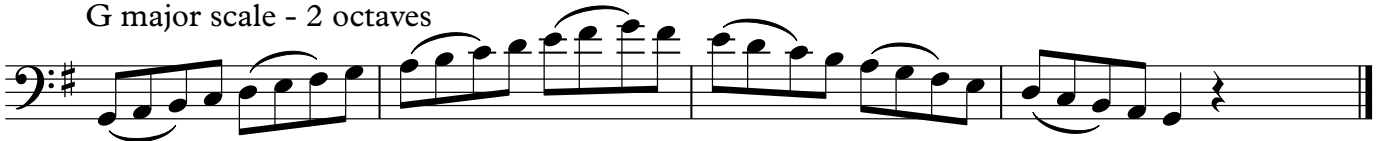
The following do not need to be played from memory
For the examination perform *all* the following

Scales ♩=96 Arpeggios ♩=46

Gb major scale - 2 octaves



G major scale - 2 octaves



G# harmonic minor scale - 2 octaves



E melodic minor scale - 2 octaves



G whole tone scale - 2 octaves



Dominant 7th in C - 2 octaves



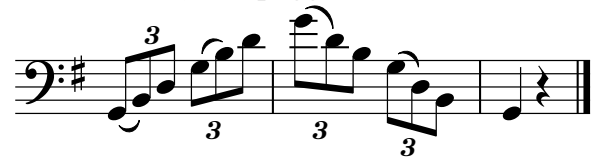
Diminished 7th on F - 2 octaves



Gb major arpeggio - 2 octaves



G major arpeggio - 2 octaves



G# minor arpeggio - 2 octaves



E minor arpeggio - 2 octaves



MTB Exams
Alternative to scales from memory
Trombone
Grade 7

The following do not need to be played from memory
For the examination perform *all* the following

Scales ♩=112 Arpeggios ♩=60

Ab major scale - 2 octaves

Musical notation for the Ab major scale over two octaves. The key signature has three flats (Ab, Bb, Cb) and the time signature is 4/4. The scale is written in a single line of bass clef notation.

B major scale - 12th

Musical notation for the B major scale over 12th notes. The key signature has two sharps (F#, C#) and the time signature is 4/4. The scale is written in a single line of bass clef notation.

D major scale - 12th

Musical notation for the D major scale over 12th notes. The key signature has two sharps (F#, C#) and the time signature is 4/4. The scale is written in a single line of bass clef notation.

A melodic minor scale - 2 octaves

Musical notation for the A melodic minor scale over two octaves. The key signature has no sharps or flats. The scale is written in a single line of bass clef notation.

C harmonic minor scale - 12th

Musical notation for the C harmonic minor scale over 12th notes. The key signature has no sharps or flats. The scale is written in a single line of bass clef notation.

C# harmonic minor scale - 12th

Musical notation for the C# harmonic minor scale over 12th notes. The key signature has one sharp (F#). The scale is written in a single line of bass clef notation.

Dominant 7th in Db - 2 octaves

Musical notation for the dominant 7th chord in Db over two octaves. The key signature has five flats (Db, Eb, Fb, Gb, Ab) and the time signature is 4/4. The scale is written in a single line of bass clef notation.

Diminished 7th on F# - 2 octaves

Musical notation for the diminished 7th chord on F# over two octaves. The key signature has one sharp (F#). The scale is written in a single line of bass clef notation.

F# chromatic scale - 2 octaves

Musical notation for the F# chromatic scale over two octaves. The key signature has one sharp (F#). The scale is written in a single line of bass clef notation with triplets.

Musical notation for the F# chromatic scale over two octaves. The key signature has one sharp (F#). The scale is written in a single line of bass clef notation with triplets.

Ab major arpeggio - 2 octaves

Musical notation for the Ab major arpeggio over two octaves. The key signature has three flats (Ab, Bb, Cb) and the time signature is 2/4. The arpeggio is written in a single line of bass clef notation.

B major arpeggio - 12th

Musical notation for the B major arpeggio over 12th notes. The key signature has two sharps (F#, C#) and the time signature is 4/4. The arpeggio is written in a single line of bass clef notation.

D major arpeggio - 12th

Musical notation for the D major arpeggio over 12th notes. The key signature has two sharps (F#, C#) and the time signature is 4/4. The arpeggio is written in a single line of bass clef notation.

A minor arpeggio - 2 octaves

Musical notation for the A minor arpeggio over two octaves. The key signature has no sharps or flats. The arpeggio is written in a single line of bass clef notation.

C minor arpeggio - 12th

Musical notation for the C minor arpeggio over 12th notes. The key signature has no sharps or flats. The arpeggio is written in a single line of bass clef notation.

C# minor arpeggio - 12th

Musical notation for the C# minor arpeggio over 12th notes. The key signature has one sharp (F#). The arpeggio is written in a single line of bass clef notation.

MTB Exams

Alternative to scales from memory

Trombone

Grade 8

The following do not need to be played from memory
For the examination perform *all* the following

Scales ♩=120 Arpeggios ♩=66

E major scale - 2 octaves

Musical notation for E major scale - 2 octaves in bass clef, 4/4 time, key signature of three sharps (F#, C#, G#).

A major scale - 2 octaves

Musical notation for A major scale - 2 octaves in bass clef, 4/4 time, key signature of three sharps (F#, C#, G#).

Db major scale - 12th

Musical notation for Db major scale - 12th in bass clef, 4/4 time, key signature of five flats (Bb, Eb, Ab, Db, Gb).

F# harmonic minor scale - 2 octaves

Musical notation for F# harmonic minor scale - 2 octaves in bass clef, 4/4 time, key signature of three sharps (F#, C#, G#).

G harmonic minor scale - 2 octaves

Musical notation for G harmonic minor scale - 2 octaves in bass clef, 4/4 time, key signature of one flat (F).

G melodic minor scale - 2 octaves

Musical notation for G melodic minor scale - 2 octaves in bass clef, 4/4 time, key signature of one flat (F).

Bb melodic minor scale - 2 octaves

Musical notation for Bb melodic minor scale - 2 octaves in bass clef, 4/4 time, key signature of two flats (Bb, Eb).

Dominant 7th in D - 2 octaves

Musical notation for Dominant 7th in D - 2 octaves in bass clef, 4/4 time, key signature of two sharps (D, F#).

Diminished 7th on G - 2 octaves

Musical notation for Diminished 7th on G - 2 octaves in bass clef, 4/4 time, key signature of one flat (F).

Ab whole tone scale - 2 octaves

Musical notation for Ab whole tone scale - 2 octaves in bass clef, 4/4 time, key signature of four flats (Ab, Bb, Cb, Db).

E major arpeggio - 2 octaves

Musical notation for E major arpeggio - 2 octaves in bass clef, 2/4 time, key signature of three sharps (F#, C#, G#).

A major arpeggio - 2 octaves

Musical notation for A major arpeggio - 2 octaves in bass clef, 2/4 time, key signature of three sharps (F#, C#, G#).

C major arpeggio - 2 octaves

Musical notation for C major arpeggio - 2 octaves in bass clef, 2/4 time, key signature of no sharps or flats.

Db major arpeggio - 12th

Musical notation for Db major arpeggio - 12th in bass clef, 2/4 time, key signature of five flats (Bb, Eb, Ab, Db, Gb).

F# minor arpeggio - 2 octaves

Musical notation for F# minor arpeggio - 2 octaves in bass clef, 2/4 time, key signature of three sharps (F#, C#, G#).

Bb minor arpeggio - 2 octaves

Musical notation for Bb minor arpeggio - 2 octaves in bass clef, 2/4 time, key signature of two flats (Bb, Eb).